

Vol 48 | No.1

FREE

# CLOPHILL SPOTLIGHT

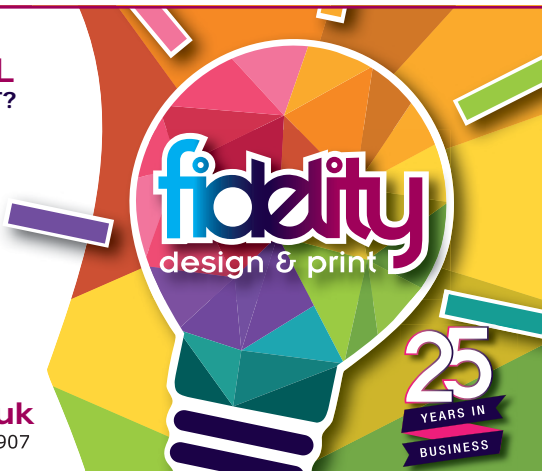
FEBRUARY 2025

**LOVE YOUR  
LOCAL NEWS**

*Looking for*  
**PRINTSPIRATIONAL  
BRANDING, DESIGN & PRINT?**

- ◆ Business stationery & forms
- ◆ Brochures, leaflets & flyers
- ◆ Posters, banners & exhibitions
- ◆ Labels & packaging
- ◆ Wedding stationery
- ◆ Photo & art printing
- ◆ Plan scan, copy & print

**[www.fidelityprint.co.uk](http://www.fidelityprint.co.uk)**  
quotes@fidelityprint.co.uk | 01234 907907



D. Andrews  
P. Fleckney

**MOTORS LTD**

**Tel: (01525) 404919**

**89 Oliver Street, Ampthill, Bedfordshire MK45 2SA**

**CAR AND COMMERCIAL VEHICLES  
ALSO CLASSIC & AMERICAN CARS**

**SERVICING – REPAIRS – BREAKDOWN  
SPRAYING – M.O.T.**



**Stuart Benson Building Projects**

**Design, Build and Maintenance including Interior Refurbishments,  
Kitchen / Bathroom fitting, Tiling, Flooring, Skirting boards, Doors  
Garage conversions. Exterior Decking, Patios, Driveways  
Garden Offices/ Sheds**

**Tel: 07946 579862 or 01525 839878**

**Email: [benson.stuart@gmail.com](mailto:benson.stuart@gmail.com)**



## **A word from the Editor...**

Welcome to the February issue of Spotlight

*Dear Reader,*

***We're back!!...***

Spotlight returns after our winter break and we are raring to go for another year.

This month we have a couple of new initiatives I would like to bring to your attention. Kate Gardner introduces a new activity group running in the Village, 'Community Garden family days', turn to the Gardening pages 2 and 3 for details.

Sue Pearson is starting a new series for the magazine later in the year about Clophill Service men of WWII. She is looking for photos or any information about them that local people may have (see page 3).

***Best wishes,  
Elaine***



## **The magazine staff**

EDITOR	Elaine Jones editorial@clophillspotlight.co.uk	07918 975823
ADVERTISING MANAGER	ads@clophillspotlight.co.uk	
DESIGN MANAGER	Colin Watt	
DISTRIBUTION MANAGER	Toni Elston Paul Leckie	07979 643047
TREASURER	Jon Bates	07725 068828

***Deadline for articles is 20th of the month***

You can also read Spotlight online

***[www.clophillspotlight.co.uk](http://www.clophillspotlight.co.uk)***

# Come into the Garden

*With Kate Gardner*



I wrote my first gardening feature for spotlight in February 2018 and looking back over the articles we have covered lots of different things from seed sowing and plants for free to lawn care and mulching. We've experienced a pandemic and seen how our fantastic community came together with photography, daily walks and Saturday night Pizza. So, what to do for the start of my 7<sup>th</sup> year of garden articles?

I've returned to that Lockdown spirit of community and thought I would take this opportunity to introduce you to your new community garden which is currently under development up the track by 9 Shefford Road.

**Bloomin' Well CIC** is a community interest company focused on creating therapeutic gardens and green spaces that bring people together. Through gardening, the aim is to foster a sense of community, encourage personal growth, and enhance wellbeing.

What started as an overgrown field, tangled with 4-foot-high brambles and brush, has become a blank canvas ready to be landscaped into stunning gardens. This is where you come in, as for this to work we need our community to be involved. Whether you are an experienced gardener or complete novice we invite everyone to become involved.

2024 has been all about preparation with new hedgerows and trees donated by the Woodland Trust and underplanted with spring bulbs donated by Dutch Grown and Farmer Gracy. Thanks to the Gardening for Disabilities Trust, we're setting up a 25-foot by 10-foot polytunnel to enable year-round planting and learning opportunities. The groundworks are being done currently but we will need the help of volunteers to fit the cover once the frame is built up.

Our gardening days have been a huge success, with volunteers of all backgrounds coming together to lend a hand. These events are open to everyone—whether you're an experienced gardener or just looking to spend time outdoors and contribute to something meaningful.

With the groundwork laid, we're excited to move into the next phase of development which will see the gardens start to take shape and our garden workshops and events start to happen. If you'd like to get involved, our gardening days are the perfect opportunity to connect with nature, meet new people, and make a positive impact.

Join us during February and March for our family days which will run from 10am -12 noon and are free to attend. Feb 8<sup>th</sup> seed sowing, 15<sup>th</sup> Feb – build our hot box bed, 22<sup>nd</sup> Feb – Pond digging, March 1<sup>st</sup> – seed sowing in our new poly-tunnel, March 8<sup>th</sup> – Pond planning and bug hotels, and March 29<sup>th</sup> when we will be celebrating mothers – watch out for more information about this in the March spotlight and keep up to date with developments by following us on facebook or contact Bev Hall (Bloomin’ Well MD) on 07468 121508 - www.bloominwellcic.com.

I’m off now to sort through my seeds, clear away some of the leaves and enjoy planning what I want to plant out in the garden for the coming season. With all of the recent cold weather I’m just doing a little light tidying around so that the birds and insects have enough protection through the rest of the winter and continuing to mulch beds as I go. It’s still a little too early to start sowing summer flowers but nothing beats sitting down with a cuppa and going over all of the seed catalogues looking for interesting plants to grow and then share the spares with the community garden.

**Happy Gardening everyone**

---

## Clophill Servicemen of WWII

On the 8th of May this year the country will celebrate **80 years since the end of WWII in Europe** so it seems an appropriate time to commemorate the 6 WWII men listed on our village memorial. (Clophill also has 24 WWI men listed on the stonework.

In comparison Silsoe has 15 for WWI and 14 for WWII, and Maulden 28 and 9.)

We intend to publish their details each month, starting in May, ending in line with the traditional commemoration in November.

We are listing their names here, hoping that those of you in the village with any photos or details might like to share them with us. We have already prepared short details of their family, work, and service.

**Sue Pearson**

[pearson.sue.m@gmail.com](mailto:pearson.sue.m@gmail.com)



**Alfred Harris**

**Thomas William Harris**

**Ernest Lincoln**

(photos etc. already received)

**Sydney Levi Matthews**

**Victor Street**

**Ernest Arthur Webb**



Wildlife Trust for  
**Beds, Cambs  
& Northants**  
Flit Vale Local Group



## Wildlife walks & talks

# February

**Friday, February 28<sup>th</sup> 2025, Maulden Village Hall. 7:00 pm  
for 7.30 pm start.**

### **Fundraising quiz for the Wildlife Trust**

Come along to our popular quiz and pit your wits against our fiendish quiz master! There are prizes for the winning team as well as spot prizes. Please note this is a cash only event for entry fee, drinks purchases and raffle. Ticket price includes a fish and chip supper or vegetarian alternative. - Due to licensing restrictions, no drink can be brought into the venue.

Please email details of your teams, including team name and meal choices to Ann at [Flitvale.info@gmail.com](mailto:Flitvale.info@gmail.com).

**Charge: £14 per person**

**Booking for outdoor and online Flit Vale events is essential, as places are limited.**

**Please contact Ann by email: [flitvale.info@gmail.com](mailto:flitvale.info@gmail.com) or**

**Phone (leave a message or text if you prefer) 075801 78889 to reserve your place.**

The Wildlife Trust for Beds, Cambs & Northants

Registered charity number: 1000412

[www.wildlifebcn.org](http://www.wildlifebcn.org)

Flit Vale Local Group

[www.wildlifebcn.org/flit-vale-local-group](http://www.wildlifebcn.org/flit-vale-local-group)

# St Mary's School News

*from Mrs. Bingley our Headteacher:*



Wow – just like that the first month of 2025 is done! At the beginning of the month, we introduced our brand new weighted lap buddies to the children. These have been purchased to support children with their wellbeing. The weighted cuddly toys help to ease the anxiety and promote a sense of security, calm and grounding for the children as they hug them on their laps.

Year 3 have enjoyed their first month of swimming at the amazing Happy Tidlers and they also had a great session with the charity Making Me, learning about Resilience and how to develop this important skill. Some Year 3 children also took part in our annual Bikeability sessions – learning how to maintain and control their bikes.

Year 1 continue to visit Irene's Wood on Wednesday mornings for their incredibly popular Forest School sessions. Even though the weather has been cold, the children have been wrapped up and continue to fully take part in the activities, often including cooking by the lovely warm fire!

At the very end of January, some of our Key Stage 2 children took also part in an Athletics Festival at Alameda school, alongside children from other local schools.

Don't forget, you can keep up to date about school events by visiting our website: [www.clophillstmarysschool.co.uk](http://www.clophillstmarysschool.co.uk) or joining our Facebook page: <https://www.facebook.com/clophillstmarysschool>

## Acorn Nursery news

*from Mrs. Hayes our Early Years Leader:*

We were delighted to welcome new children to our Nursery in the new year and over the past weeks all our wonderful children have displayed our values of friendship, love and respect and helped them settle in brilliantly to our Nursery routine. New friendships blossoming is lovely to see!

The natural world has provided a wondrous experience with the ice and frost and we enjoyed freezing items in our tuff tray overnight and then helping them 'escape' with tools the next day! We've had plenty of winter themed activities available such as ordering penguins by size, using tweezers to decorate snowmen with poms-poms.

This term we are looking at a variety of stories in depth – we looked at the classic story 'Red Riding Hood'. We've read it and acted it out together, practiced our pencil control by colouring pictures and cut out the characters and made our own figures for small world play. Together with all our usual resources available there is no shortage of opportunities for learning through play in Acorn Nursery!



## Acorn Nursery news cont...

### Jake our School Dog:

Jake has been enjoying lots of wellbeing cuddles in January. We know that lots of people get the 'January blues' after a busy and fun-filled Christmas and Jake definitely helps us all to feel happier and brighter. As you can see from the picture, it's not just children who like a Jake cuddle – I'm a bit partial to one too!



### Our Value for February is Resilience (Perseverance):

**In school**, we will discuss the fact that achievement isn't easy and to succeed requires time and effort. Giving up is easy but it doesn't usually result in satisfaction. We will point out that houses are not built overnight, books are not written in a day and gardens don't look after themselves; all these things take hard work and perseverance. Children will be encouraged to spend time and effort over their activities this month and we will celebrate the fruits of their labours, as always, by sharing their work in our celebration assemblies. It should be clear to everyone that when you make the effort and do your best the feeling of satisfaction and pride makes it all worthwhile!

**At home**, you could each choose a task which needs completing and find out who can see their task through to a successful conclusion. Hopefully everyone will achieve this and a lot of things which needed doing will be done!

**Thought for the month:** 'Many of life's failures are people who did not realise how close they were to success when they gave up.' *Thomas Alva Edison*

### Recycling for charity

Thank you so much for the used stamps you have popped through my door.

I am sending them regularly to Redwings and they are extremely grateful.

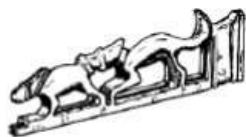
I will continue to collect any used stamps, foreign stamps and any out of date stamps all the year round so do pop them into my box outside my front door at 59 High Street. And do encourage anyone you know to save them too.

Many thanks, **Angela Barker**





**Amphill & District Archaeological  
& Local History Society**



**Monday 3<sup>rd</sup> March 2025**

## **The Monastic Heritage of Old Warden Parish Church**



Henry VIII insisted on demolishing Warden Abbey, but the parish church escaped virtually unscathed. With clues ranging from a 14th-century font to medieval stained glass windows, the building quietly revels in its monastic past.

**Speaker** - Margaret Roberts.

**Flitwick Library Lecture Theatre, MK45 1QJ, 7.30 for a 7.45 pm start.** Members are free, and visitors are very welcome £5.00, payable at the door. Tea and coffee will follow. The talk will also be broadcast live via Zoom to Society members.

**April 7th – AGM & The Old House(s) at Wrest**

The history of the previous house to the 1830's, and its proposed replacements.

**Speaker** - Richard Luscombe

[www.adalhs.org.uk](http://www.adalhs.org.uk)



We began by celebrating Burns Night in traditional style! The children peeled their own vegetables to make a delicious meal of haggis, neeps, and tatties. They were fascinated to learn how haggis is made and thrilled to try it for themselves—much to everyone’s delight, it was a big hit!



We took part in the RSPB Big Bird Watch. We spent the morning in our woodland, peacefully watching and listening to the wide range of birds that visited us. We are so lucky to learn at our centre: last year, we had one of the most diversely populated bird settings, and the RSPB even wrote to tell us! We’re hoping for the same result this year after our observations this time.



Our main focus this term, inspired by the children’s interest in Henry VII, has been The Terrible Tudors. This topic has taken us on an incredible journey back in time, filled with hands-on activities. The children designed and created their own Tudor clothing, crafted brown leather Tudor purses, and even explored Tudor medicine by harvesting herbs from our garden. Using ancient recipes, they made headache remedies and cough syrups to take home, which sparked their imaginations and love of history.

We delved into Tudor perfume-making, with the children creating their own floral scents and crafting small vials to gift to their parents. They’ve also taken on the role of Tudor jewellers, working with metals and gems and using a soldering iron to bring their designs to life. The care and pride they’ve shown in their creations have been a joy to see.

In addition to our Tudor-themed activities, we’ve cherished our visits to Beverley Court. The children have been working alongside their older adult friends, creating stunning wax-resist watercolour paintings together.

At our allotment, we rolled up our sleeves just before Christmas to dig out our winter vegetables, clear the beds, and plant lots of spring bulbs. The children worked so hard, and now we’re eagerly awaiting the first signs of beautiful spring blooms.

Later this month, we’re heading to Milton Keynes Theatre to see the Horrible Histories live show. The children can’t wait to see the Tudors come to life on stage and have been learning some of the Tudor songs in the hope they will crop up in the show and we can all sing along!

We’re also looking forward to rounding off this half term with our own Tudor banquet, complete with a feast inspired by the era. After the banquet, we’ll be treated to a favourite Tudor pastime: falconry! Birds of prey from Herrings Green Farm will visit us, and the children will have the chance to learn how to fly the birds, which they are very excited about.

St Mary the Virgin. Clophill

*Please come to our*

# *Lent Lunches*



**12<sup>th</sup> March**

**19<sup>th</sup> March**

**26<sup>th</sup> March**

**2<sup>nd</sup> April**

**9<sup>th</sup> April**

**12 noon -2pm**

**at St Mary's Church, Clophill**

**Donations will be given to Wateraid**

*Everyone very welcome*

**Raffle**

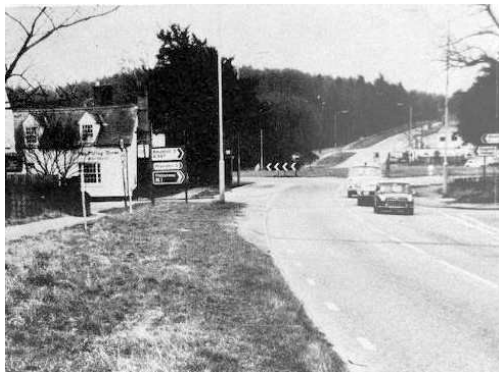
For information phone Carolyn 01462 815433 or Gill Jones 01525 861058

Please call if you require transport.

## Reflections – Clophill in February 1980 - Voices from the past.

Continuing our series looking back at previous issues of Spotlight and Clophill Village life..... By Julie Benson.

As now, the first 'Spotlight' issue of 1980 was a double Jan/Feb which I covered



in December's piece, so we are going to see what went on in February by looking at March's issue. The cover picture shows the Silsoe Bypass under construction, with the comment "Won't it be a relief when this congestion is eased at this crossroad?" (Talk about history repeating itself eh!)

The Editorial thanks John and Beryl Burger (who used to own the Post Office and shop in the centre of the village) for getting the much needed

Youth Club up and running, and "it is to be hoped that the Management Committee of the Village Hall (don't ask for) unreasonably high hire-charges (which will) force the Youth Club into premature closure." A later, enthusiastic article by a 'Senior member' tells us that "it is good to see all our young people enjoying themselves in various ways. Table tennis, billiards, darts and table football, chess, draughts, Scrabble, Cluedo, cards and suchlike. The Motor Cycle Maintenance classes, the Beauty Care and Hair Care demonstrations have keen audiences. All in all, 'It's a jolly good thing, this Kiln Youth Club', as one of its fifty-five members said over a game of Whist."

The Parish Council at their January meeting discussed various topics including the decision to contribute towards the maintenance of the Village Hall; "the Old Lock-up has been repaired by Whitbreads, who own it, and the Parish Council have the keys." Also, being a tad topical "Floods – Following extensive flooding in December, the Anglian Water Authority have been dredging the drainage ditches below the Flying Horse." A month later, discussions covered the pruning of Beverley Court trees, where the District Council, having done nothing," the Parish council will get an estimate independently and send it to the District Council for their approval." Townshott has a playground planned for the north-west corner and the allotments rents were set at "£3 for 10 pole (250 sq. m), £2 for 5 pole (125 sq. m). Including water.

The Guides had been very busy gaining many badges which were presented by the Division Commissioner at a celebratory meeting where parents, Brownies and Commissioners attended. Donna Beatty and Amanda Telford 'went up to Guides' and Linda Howell and Claire Healey were presented with tier Queens' Guide badge. (Congratulations to both girls, it isn't easy!).

## Reflections – Clophill in February 1980 - continued ...

Also Elizabeth Brooker and Carolyn Jones received their Challenge and Entertainer badges, Joanne Constance her Hostess and Pathfinder, Katy Bousted, Julia Knox, Catherine Naylor and Jan Whittles earned their Hostess badges, while Karen Wynn and Juliet Gordon received their Pathfinder badges.” Alison Cardosi also received her blue tie, signifying that she has become a senior member of the company.” (What a busy and hard working troop.)

The **W.I.** had a talk given by Mr K. Lilley on ‘The Care of House Plants’ while the **Clophill & District Flower Club**, with Mrs Cranswick in the Chair, enjoyed a demonstration by Mrs S. Weaver entitled ‘Textural Delights’.

The **Netball teams** were doing well, the second team – The Robertsons – being currently top of the second division, with the other two winning the majority of their games.

The January **Children’s competition** – Make a Collage – where “The standard of entry was high”, had winner Sarah Henman (aged 7) and runner-up Lucy Knowles (aged 6) with Joanne Davis (4), Robert Brooks (7) and Stephen Patrick (8) being highly commended.

**March birthdays** greetings were for Helen Greenwood (9), Hannah Muihead (3) and Andrew J. Baker with Hannah winning the £1 gift token. ‘To pot, or not to pot’ was the title of the gardening **feature** and Chocolate crunch the recipe with an interesting article on the Chinese Self Defence Arts. Roy Sollars, our then County Councillor, wrote “I’ve just seen copies of your magazine and would like to offer my congratulations to you all. It’s an imaginative piece of journalism and it pleases me to see such a fine example of a corporate village activity in Bedfordshire.” What an accolade!

---

## Clophill Lakes Update

In preparation for the opening of **Clophill Lakes Nature Reserve**, a significant aspect is how we tell the story of the whole site.

From castle to quarry to nature reserve, there are many stories we are uncovering to better understand the nature reserve and to bring its history to life for those that will be visiting.

We are grateful for all of the Clophill residents who have come forward with stories and photographs. This has given us much more information on how the site was quarried and the changes that occurred across the site, such as diverting the river. Our plan is to produce some before and after photographs, showing the contrast between quarry and how nature has recolonised.



# Clophill Lakes Update continued ...

Telling the story of the **Cainhoe Castle Scheduled Monument** is another area we have been working on, preparing information for visitors. As well as the Norman motte and bailey, there was also a moated manor house, most likely a fairly modest timber hall. From our archival research, this manor included a bakehouse, dovecote, stables, and beehives. Medieval fish ponds are also present, which supplied the manor with fresh fish all year round. Trustee Gillie Sharpe has produced some excellent reconstruction pen and wash paintings, showing the castle and the manor how it might have looked in the medieval period. These help to bring everyday life in the castle to life.

Clophill Lakes sometimes gives up its history without us searching. During recent ecological monitoring, Senior Ecologist Sue Raven found remains of a water bottle from the 1950s or earlier. Some light research later, it originated from J.



Burgess 'Celebrated Mineral Water' in Oliver Street, Amptill. Whilst small (and litter when it was dropped) it's an interesting nugget of social history. We can only wonder who might have dropped it, looking out over fields that had been untouched by quarrying.

Conservation Update: It's a quiet time of year for much of the wildlife there but the lakes do attract a number of species of wildfowl to overwinter. On a recent visit these included ducks such as mallard, tufted duck, pochard, mandarins, gadwall, teal and wigeon with little grebes, great-crested grebes and mut swans also around. Signs of otters are still regularly seen. When the river receded after the recent floods it left a covering of sand and silt on the banks which showed up their footprints very clearly.



On the conservation front our ranger and volunteers have been busy most recently pushing back overhanging trees from the tracks and paths and coppicing the few trees left obscuring the right-side view of the mounds to further open up the view of the lakes.

**We still need your donations to our appeal to help the new nature reserve – please donate any amount you wish at [www.greensandtrust.org/appeal/clophill-lakes](http://www.greensandtrust.org/appeal/clophill-lakes)**



St Mary's Church. Clophill

Please come to a

# Coffee and Cake



# Morning

**Saturday 15<sup>th</sup> February**

**10 am. – 12 . 00pm**

**in the Church**

**A special event in aid of Janina,  
our adopted child in Paraguay  
to help to give her a better life**



# Clophill Preschool News

**Hello everyone,**

What weather we are having! It's just as well we are a hardy bunch. We also have the benefit of using the hall when the weather warnings or below freezing weather hits hard. Being able to come in for mealtimes makes us all realise how much we appreciate learning in the outdoors and the relative peace and quiet it offers alongside the obvious freedom.

It's been a very busy start to the new year with everything from observing Squirrel Appreciation Day with a squirrel quiz to making electrical circuits to make propellers spin. The children have played Clock Patience with giant playing cards to promote number and shape recognition and concentrated on their fine motor skills through dough disco and threading activities including making fruit bird feeders using knives to cut and thread the fruit onto wire.



The children have explored the ice created outside and discussed its change from liquid to solid then because we have access to the hall, they brought it inside to explore the change back to water. Carol has been leading the children in the Big School Bird Watch from the RSPB. The children have listened to birdsong then recorded it onto an app to help identify it. They used bird spotter sheets to note those they saw and used books to identify them.

Each session our children have a group time run by our excellent staff, this month there has been lots of use of rhymes and songs for our smaller children, taking traditional rhymes and changing the words and acting out characters of songs like Old MacDonald. Children learn to move in different ways, they notice rhythm in words and phrases thus developing their listening skills. Our older children have been having fun playing number matching games and Bingo and following on with their fine motor work of threading they have been developing their number writing skills.

Outside we have planted tree whips around the site and the Friday Adventurers have been rejuvenating the Community Allotment by replacing some of the degraded matting and wood chip.

As we head towards the second half of our term, we look forward to starting to sow seeds ready to put in our greenhouse. Children will be checking for our winter harvest and starting to get the allotment ready for new planting for spring and summer. We will also be checking our pond to make sure it's topped up and remove any debris. The children will also design and make some chicken enrichment resources for our chooks.



**Clophill and District  
Flower Club**

[www.clophillflowerclub.com](http://www.clophillflowerclub.com)



invite you to join them for

# *'Anything Goes'*



*A floral demonstration  
by  
Theresa Rodrigues*

***Thursday 6 March 2025***

*6.45 for 7.30pm*

*Clophill Village Hall*

*Visitors always welcome at all our meetings - £7*



*For further information see our website  
or call Gillian on 07960 662334.*



# Clophill Parish Council

A busy January meeting, with a good turnout.

**The Chairman's Award** was presented to Rosemary Ilett for her many years of service to the village. Rosemary was instrumental in the set up and running



of Fun Zone the first breakfast and after school club in the village. She has also been a church warden and organised many charity events.

**Appointment of Interim Clerk:** The Chairman thanked Tim Hill for his service and welcomed Heather Myott as interim Clerk. Applications are welcome from interested parties for the permanent role, which is 12 hours a week. Please email [clerk@clophill-pc.gov.uk](mailto:clerk@clophill-pc.gov.uk)

**The village noticeboard** has been kindly replaced with a new magnet one, a big thank you to Craig Nester of Habitat Landscapes for undertaking this for the village, and ensuring the community asset is retained.

**With the recent resignations** from the council advertised we have had three expressions of interest, Craig Nester, Chloe Burks-Yates and Sarah Matlock. The co-options will be voted on at the February meeting.

**The precept and budget** were discussed and approved at the meeting. In real terms parishioners will see an increase in their annual contribution rise from £47.35 to £52.08. This has been necessary to ensure the budget continues to cover the current services provided in a very challenging economic environment.

## Planning Applications:

**CB/TCA/24/00583** – 3 Great Lane

Proposal: Works to trees within a Conservation Area: Removal of dead branches and reduction in height by 10% to Birch Trees (Tree 1 and Tree 2) to reduce vulnerability to high wind. **NO COMMENT**

**CB/24/03474/FULL** – 12A Back Street

Proposal: Erection of a detached chalet bungalow and associated works with new detached garage for existing dwelling, alterations to access. **NO COMMENT**

**CB/24/03473/FULL** – 17 The Green  
Proposal: Single storey rear extension.

**NO COMMENT**

**CB/24/03337/VOC** – Mouse Farm, Shefford Road

Proposal: Variation of condition number 2 of planning permission CB/23/04018/  
VOC (Variation of condition number 2 of planning permission CB/21/04756/FULL  
Erection of 4 detached dwelling and associated works) Variation sought to plans.

**NO COMMENT**

**The Next Meeting is 25th February, 7:45pm in the Methodist Church.**

## **ST. MARY'S CHURCH NEWS**

2024 was quite a year at St. Mary's with our excellent celebration of 175 years and the retirement of our Rector. Since Lynda left, we have continued to function thanks mainly to the sterling efforts of Eric and Anne Shegog, who have held the fort magnificently, ably aided by the PCC and other volunteers who have stepped up. Special mention must be made of the fund-raising team who have surpassed themselves!



We are now in the happy position to announce that our new Rector has been appointed. It is Rev. Steve Marsh, who is currently a curate in the Elstow partnership. He will be formally instituted on June 24th in Maulden Church. He and his wife and children will live in Maulden Rectory.

Our Christmas events passed off very well. Almost 60 people enjoyed the excellent lunch in the church on December 19<sup>th</sup> when an amazing £950+ was raised for church funds. Thanks to everyone who organised, prepared, served, attended and donated.

The Carols by Candlelight Service on Christmas Eve was attended by more than 100 people and the £400 donated was divided between the church and Shelter. Thanks to everyone who participated and gave so generously.

As usual we were pleased to welcome the Greensand Community Choir for their annual Christmas concert, which as always was packed out by an appreciative audience. Donations were divided between the church and the choir's chosen charity.

Our next event will be our Coffee and Cake morning on Feb. 15<sup>th</sup> for Janina, the girl in Paraguay we are supporting through her education. Please join us.

# What's on in and around Clophill

## FEBRUARY

### **Saturday 15<sup>th</sup>**

Coffee and Cake morning, St Mary's Church, 10am – 12noon. *See poster.*

### **Saturdays 8<sup>th</sup>, 15<sup>th</sup> and 22<sup>nd</sup>**

Community Garden family days, off Shefford Road, 10am – 12noon. *See Gardening page.*

## MARCH

### **Thursday 6<sup>th</sup>**

Flower Club, Village Hall, 6:45pm for 7:30pm. *See poster.*

### **Wednesdays 12<sup>th</sup>, 19<sup>th</sup> and 26<sup>th</sup>**

Lent Lunches, St Mary's Church, 12noon – 2pm. *See poster.*

### **Saturdays 1<sup>st</sup>, 8<sup>th</sup> and 29<sup>th</sup>**

Community Garden family days, off Shefford Road, 10am – 12noon. *See Gardening page.*

### **Plus....**

### **Weekdays during term time**

\* Clophill Community Hub is open, Village Hall, 9am to 3pm.

**Also open on Saturdays 10:30am to 2:30pm.**

### **Mondays...**

\* Greensand Community Choir, St. Mary's Church, 7:30-9pm.

### **Wednesdays...**

\* Tea and Chat, Greensand Community Methodist Church, 10:30am – 12noon.

\* Beverley Court Bingo Night, in the Residents lounge, 7pm. All welcome.

### **Thursdays...**

\* Winter warmers – St Mary's Church, 12noon – 2pm followed by....

Thursday Leisure Club – TLC – St Mary's Church, 2pm.

### **Fridays ...**

\* Little Saplings, Stay and Play 9:30am – 11:00am, Acorn Nursery at St. Mary's School.

### **Fridays... during term time**

\* Clophill Parent & Toddler Group 9:30am – 11:30am, Village Hall.

## CHURCH SERVICES

### **Regular services at St Mary's Church, Clophill...**

1<sup>st</sup> Sunday 11am, Parish Praise

Other Sundays 11 am, Parish Communion

**Services at GC Methodist Church, Clophill. See noticeboard outside church for dates and times.** 1<sup>st</sup> Sunday United Service 10.30am held at different hubs

2<sup>nd</sup> Sunday 10.30am Local Preacher

3<sup>rd</sup> Sunday 9.30am Communion Rev. Wood

4<sup>th</sup> Sunday 11:00am Rev. Wood

## Useful numbers

Gas (Emergency)			0800 111999
Electricity (Emergency)			0800 7838838
Emergency Fire/Police/Ambulance			999
Water/Sewage (Anglian Water)			0845 7145145
Telephone		(Customer Services) 150	(Faults) 151
Highways Department (Central Bedfordshire Council)			0300 3008049
Benefits Agency (Bedford office)			01234 361500
Registrar's Office (Births/deaths/marriages)			0300 3008089
Rail (Enquiries)			0845 7484950
Buses	01234 262151	(Link A Ride) 01525 840511	(Flittabus) 01582 406561
Luton Airport			01582 405100
Swimming		(Flitwick) 01525 717744	(Robinson Pool) 01234 212479
<b>LOCAL GOVERNMENT</b>			
Central Beds Offices (Chicksands)			0300 300 8000
Mid-Bed; MP		Alistair Strathern	TBA
Central Bedfordshire Councillors		Susan Clinch	0300 300 8516
		Gary Summerfield	0300 300 8561
		Mark Smith	0300 300 8541
Clophill Parish Council	(Clerk) CPC recruiting clerk@clophill-pc.gov.uk		07888 685886
<b>HOSPITALS</b>			
Bedford (North & South)	01234 355122	Admissions	01234 261150
		Appointments	01234 359012
Luton & Dunstable			0845 1270127
<b>DOCTOR'S CLINICS</b>			
Amphill	(Houghton Close) 01525 300898	(Oliver Street)	01525 631395
		(Greensands)	01525 631390
Shefford	Enquiries 01462 818620	Appointments	01462 810034
Barton	01582 528700	Flitwick	01525 715300
<b>POLICE</b>			
County Police HQ		Non Emergency	101
Amphill Station			01234 841212
			101
<b>CHURCHES</b>			
St Mary's Parish Church			
	The advertisement is now posted for the new Rector		
	(Church Warden) Mrs Anne Shegog	anneshegog@gmail.com	01525 864868
St Francis RC Church, Shefford			01452 813436
Clophill Methodist Church	Revd Silas Wood, email: swood11@me.com,		01525 571392
	Mr John Errick		01525 860695
Baptist Churches		(Maulden) Ian Crawford	01525 634325
		(Shefford) Hazel Arnold	01462 812564
<b>SCHOOLS</b>			
St Mary's C of E Lower School, Nursery & Preschool (Headteacher Mrs K Bingley)			01525 860206
Harlington Upper School, Harlington			01525 755100
Preschool	clophillpreschool@gmail.com (Chris) 07936 006381 or (Imogen)		07765 887868
Redborne Upper School, Amphill			01525 404462
Robert Bloomfield Middle School, Shefford			01462 628800

# Parish Registers for February

There are no parish registers this month as I have not been able to go to the Records Office.

---

## ST. MARY'S CHURCH REGISTERS FOR DECEMBER 2024 & JANUARY 2025

### Memorial Service

Dec 13 Janet Myers, 88.

### Funeral

Jan 03 Michael John Jeffrey, 91.

---

## Village groups

Beverley Court		860920
Brownies	<a href="mailto:enquiryym.girlguiding.org.uk">enquiryym.girlguiding.org.uk</a>	
Clophill Community Care	Duty Contact	07791 773705
Clophill Heritage Trust	Ali Bradbury	07894 710001
Clophill Parent and Toddler Group		
	Imogen	07765 887868
Clophill Preschool	Imogen	07765 887868
	Chris	07936 006381
Clophill St Mary's C of E Lower School, Nursery and Preschool		
	Tracy Hayes	860206
Clophill United Charities	Val Martin	07845 731134
Community Garden	Bev Hall (Bloomin Well)	07468 121508
	<a href="http://www.bloominwellcic.com">www.bloominwellcic.com</a>	
Conservation Group	Brian Adams	862297
Flower Club	Gillian Hill	860539
Funzone After School Club		07903 167493
Greensand Community Choir	Luke	07975 520085
Indoor Carpet Bowls	Tony Meredith	860754
Messy Church	Victoria Higgins	07920 568861
	<a href="mailto:victoriajhiggins@hotmail.co.uk">victoriajhiggins@hotmail.co.uk</a>	
Friends of St Mary's (FOSM)	Mary Milne and Jenny Garnham	
	<a href="mailto:fosmclophill@gmail.com">fosmclophill@gmail.com</a>	
Scouts and Cubs	<a href="http://www.scouts.org.uk/get-involved">www.scouts.org.uk/get-involved</a>	
Tea and Chat	Anita Errick	860695
Village Hall Booking Secretary	Marylin Browning	07821 643936



# Chapman & Kirby Heating

Gas, Plumbing & Heating Installations



Gas Safe Registered

Boiler Servicing & Maintenance

Call us now on: 07831 132308

Email: [info@chapmanandkirbyheating.co.uk](mailto:info@chapmanandkirbyheating.co.uk)

11 Lyall Close, Flitwick, Beds., MK45 1JB



## ACCOUNTING SERVICES

Providing a Much Better service for Mid Beds since 2000

If you are *Self-employed* or a *Small Business* and require assistance with  
**Accounts, HMRC tax returns, VAT**

we offer a total confidential service at competitive rates

Contact T: 01525 861087 M: 07714189994 E: [mbaccounts@btinternet.com](mailto:mbaccounts@btinternet.com)

Telephone  
**01525  
860526**

## The Stone Jug

**A Free House**

BACK STREET, CLOPHILL

**A Proper Pub for Proper People**

A family run village 'boozer' serving up great value, quality lunches that will fill you up without emptying your wallet! A pub is for 12 months of the year, 365 days and we're here for you on each and every one of them!

- 5 real ales, including 3 guest pumps that change frequently (see our Facebook page for details)
- selection of wines and Prosecco by the glass – or even better, by the bottle
- home-cooked lunches Tues-Sat, 12pm-2.30pm



**REMEMBER OUR MOTTO**

**"A VISIT TO THE JUG IS BETTER THAN GOING TO A PUB"**

**CHEERS JOYCE, VIKKI & MARK**

[www.stonejug.co.uk](http://www.stonejug.co.uk)

[www.facebook.com/thestonejugclophill](http://www.facebook.com/thestonejugclophill)

## Take out an annual ad in Clophill *SPOTLIGHT*

*Black & White per year*

This is one-half £123 Height 92 x Width 126 mm

Please email our Advertising Manager

ads@clophillspotlight.co.uk

Other sizes:-

A sixth of a page (H31mm x W126mm) £58

Quarter page (H92mm x W61mm) £75

A third of a page (H61mm x W126mm) £88

A full page is £230



### **A Family Vet for Family Pets**

We are a family-owned veterinary practice in the centre of Ampt Hill. We believe in providing fantastic stress-free care tailored to individual pets and owners.

We have now launched our Pet Health Plan, to help make preventative health care for your pet as easy as possible.

For more information:

Visit our website at

[www.ampthillvets.co.uk](http://www.ampthillvets.co.uk)

or

Phone us on 01525 582002

or

Pop in for a chat and to meet the team



We offer a FREE review of your existing Will.

### **Having a Will in place provides peace of mind**

So many people have died without a Will thus increasing the stress and expense (and often the tax) that their families face.

## **SEVEN GOOD REASONS TO REVIEW YOUR WILL**

- ◇ Have you married or entered Registered Civil Partnership since the date date of your last Will? If so, your Will is annulled.
- ◇ If you have no valid Will, the State's distribution of your assets may not be as you would have wished and could result in higher tax.
- ◇ Was your Will home made? If so, you could be storing up difficulties for the family and higher tax could be payable.
- ◇ Executors are personally liable. Are they still willing and able?
- ◇ Do you have children under 18? If so, you need to nominate guardians or they become the responsibility of the Local Authority
- ◇ Will your family be able to claim all tax allowances? Many Wills written before 2017 do not allow the full Nil Rate Band to be claimed.
- ◇ Are you in a second marriage? Special provision should be made for blended families.

- ◆ We quote our fixed fees up front and believe in plain English
- ◆ We meet with you in informal surroundings and spend a lot of time making sure we get everything right and you are happy
- ◆ We advise on the most tax effective solutions
- ◆ Our clients tell us that their experience has been a pleasant one and they are extremely glad that they have the necessary documents in place.

**Please phone Susan Shaw now:  
Shaws Wills and Trusts 01525 862053**



DAVID JAMES



WWW.DAVIDJAMESKITCHENS.CO.UK



MANUFACTURE DESIGN INSTALLATION

We are a local manufacturer of beautiful kitchens. We sell direct to save you money. The factory showroom has an extensive display of different styles.

SAVINGS ON ALL KITCHENS

& Up To 25% Off Top Brand Appliances

01525 722230 PULLOXHILL BEDS MK45 5EU

SCENTSY



INDEPENDENT CONSULTANT



Join the wonderful world of Scentsy for all your home fragrance, wax warmers, cleaning products and so much more!!

- Plug in wax warmers - no flame, smoke or soot!
- All warmers come with a Lifetime guarantee!
- Premium quality paraffin wax scent bars!



@Tracy's Scentsy Treasures



tracyscenttreasures.scentsy.co.uk



APN ELECTRICAL

- ✓ Rewires - Extensions, New Builds & Renovations
- ✓ Consumer Unit Upgrades
- ✓ LED Lighting Upgrades & Installations
- ✓ Outside lights & Security Lighting
- ✓ Power Supplies to Outbuildings, Sheds & Garages
- ✓ Smoke, Heat & Co2 Detectors
- ✓ Fault-Finding & Repairs
- ✓ Boiler Controls
- ✓ EICRs (Electrical Inspection Condition Reports)
- ✓ EV Charging Points



- ✓ Free no obligation quotes
- ✓ Friendly and reliable service
- ✓ Fully insured

CONTACT US FOR A FREE QUOTE...

ALEX NEW

07531765164

Apn.electrical@outlook.com



# 6 WEEK CHALLENGE



- **TRAIN WITH US 3 TIMES A WEEK ON OUR GROUP TRAINING PROGRAM**
- **PERSONAL NUTRITION COACHING AND ACCOUNTABILITY**
- **BUILD STRENGTH, FITNESS AND GET IN GREAT SHAPE**

#### **WHERE IS THE GYM?**

**OUR GYM IS BASED AT UNIT 3, LONDON LANE, HAYNES WEST END, BEDFORD, MK45 3RA**

#### **WHEN ARE THE SESSIONS?**

**WE HAVE SESSIONS AVAILABLE EVERY WEEKDAY MORNING (6-11AM) AND EVENING (5-9PM) PLUS SATURDAY MORNINGS (7-11AM). YOU CAN COME TO WHICHEVER SESSIONS SUIT YOU BEST.**

#### **DO I NEED TO BE FIT?**

**NO - WE'LL MAKE SURE YOU'RE WORKING AT A PACE THAT MATCHES YOUR EXPERIENCE AND FITNESS LEVEL.**

#### **WHAT HAPPENS AFTER?**

**IT'S YOUR CHOICE - YOU CAN BECOME A FULL MEMBER OR IF YOU DECIDE WE'RE NOT FOR YOU, WE CAN PART WAYS WITH NO HARD FEELINGS.**

**INFO@TRIBESTRENGTHGYM.COM**

**TRIBESTRENGTHGYM**

**WWW.TRIBESTRENGTHGYM.COM**

**CALL US ON 07500006408**



THE  
**AVENUE**  
KITCHEN

**NEW COFFEE SHOP NOW OPEN IN WREST PARK  
WITH INSIDE AND OUTSIDE SEATING AVAILABLE**



**DOGS WELCOME 🐾**

**POP IN FOR BREAKFAST, LIGHT LUNCHES, OR TEA  
AND HOMEMADE CAKE**

**PLEASE CHECK OUR SOCIAL MEDIA FOR CURRENT  
OPENING TIMES**

**📍 THE AVENUE KITCHEN  
01525 864400**


**BUILDING 59, WREST PARK, SILSOE, MK45 4HS**

Stray Cat  
Rescue



We are a registered charity, run by volunteers. We are based in rural Bedfordshire and have been rehoming and rehabilitating cats for over 20 years.

We always have lots of beautiful cats waiting for loving homes.

*If you're looking to adopt, please check out our social media pages & get in touch with us!* 



[facebook.com/StrayCatRescue](https://facebook.com/StrayCatRescue)



[straycatrescue](https://straycatrescue)



[www.straycatrescue.org.uk](http://www.straycatrescue.org.uk)



Bespoke carpentry and joinery solutions serving homes in Clophill and the surrounding area. Fully qualified with over 40 years' experience. We specialise in creating quality bespoke storage solutions, door hanging, fitting wooden flooring and refurbishing staircases, alongside a wide range of general carpentry and joinery services.

[info@purejoinerysolutions.co.uk](mailto:info@purejoinerysolutions.co.uk)

07786 463217



## Tammys' Talons

Nail Technician  
Gel. Manicure and Pedicure

IZABELLEHAMMON  
NAIL TECHNICIAN & PEDICURE  
CALGEL IZ CHIPP

**Tammy Kirby**

Clophill, Bedfordshire, MK45 4AW

Tel : 07968379309

[tammystalons@gmail.com](mailto:tammystalons@gmail.com)

## Laptop & Computer

Printer, Apple Mac, setup, Repair, Data Recovery, Internet, Wireless Network, Virus Infection, Hacked, Email setup, Home office computer problems. **NO FIX- NO FEE. Qualified & Experienced. 'We Come 2 You'**  
**01525306316- 07925338435 Pclaprepairs@gmail.com**

A new professional  
dog grooming salon in Clophill

Please contact Freya on  
**07503 923165**

*Freya's*   
DOG GROOMING



# LOCAL INDEPENDENT MORTGAGE ADVICE



- Access to the whole market
- Industry experts
- Personal service
- Vast experience
- Remortgage
- First time buyers
- Moving home
- Buy To Let



**THE  
MORTGAGE  
EXPERT**

[www.tmexpert.co.uk](http://www.tmexpert.co.uk)

Contact your local independent mortgage expert: **01525 30 67 60**

Endeavour House, Wrest Park, Silsoe MK45 4HS

**YOUR HOME MAY BE REPOSSESSED IF YOU DO NOT KEEP UP REPAYMENTS ON YOUR MORTGAGE**

We charge a fee of £495 for the straight forward mortgage application and up to £1,495 for the more complex ones.

Prior to application we will let you know when this becomes payable.

Please note we do not charge any fees upfront or for any initial advice.



## WREST PARK TUTORS

Face-to-Face Tuition  
Maths, English, Science  
Reception to A Level

- Expert tuition from qualified teachers
- Tailored to your child's level
- Fully equipped learning centre in the grounds of Wrest Park
- Term-time and/or school holidays

Our students develop confidence,  
resilience and independence.  
They love learning with us.

QUALIFIED TEACHERS NEEDED TO  
JOIN OUR TEAM OF TUTORS

Contact Katie at  
[wrestparktutors@gmail.com](mailto:wrestparktutors@gmail.com)

  @wrestparktutors

## E.T. Accountancy Services

Experienced Chartered Accountant and Chartered Tax adviser based in Clophill providing a full range of accountancy and taxation services to businesses and private individuals.

To arrange a free initial consultation please telephone me on 01525 590465 or email [emma@et-accountancy.co.uk](mailto:emma@et-accountancy.co.uk)

Chartered Accountant and  
Chartered Tax Adviser

Emma Thoullass FCA CTA  
[www.et-accountancy.co.uk](http://www.et-accountancy.co.uk)

01525 590465

**Painter and Decorator**  
Call Chris : 07950714579



*do you want your  
home brightening up?*

*all interior & exterior work*

*no job too small!*

*free no obligation quote*

*25 years experience  
& fully insured*

*facebook: @christopherthepainter*  
*email: chris.minihane@btinternet.com*

## **JK Garden and Landscape Services Ltd**



**We offer...**

*full landscaping service  
patios  
fencing  
decking  
new lawns  
driveways  
all garden maintenance*

Contact us on **0791 2028254**  
or at **jkgardening@hotmail.co.uk**

You can also find us on Facebook

## **Kings Windows**



Available in a range of traditional colours  
Choose classic joints to look like wood  
Stunning handle options

### **TIMELESS FLUSH TIMBER ALTERNATIVE WINDOWS**

as seen in *The Old Compasses & The Stone Jug*

*available exclusively from  
Kings Windows*



**01582 882 800**  
**www.kingswindows.co.uk**

Lively,  
stimulating  
sessions

Great songs,  
Pop, musicals,  
folk, classical,  
world music  
and more

# Greensand Community Choir



**Mondays 7.30pm - 9pm,**  
St. Mary's Church, High Street,  
Clophill MK45 4BJ

No auditions,  
no need to read  
music

Come along and sing with your  
local community choir, for adults of all  
singing abilities



e: [greensandcommunitychoir@gmail.com](mailto:greensandcommunitychoir@gmail.com)  
t: **07975 520085**

Find us on

Yellowpages.com



- All aspects of plumbing
- Oil heating and maintenance
- Drainage
- Free quotations on all bathroom refits and renovations
- 24-hour callout

Telephone:  
**07789 693959**

Email:  
**jamieb535@  
googlemail.com**

*I specialise in  
bathroom design*



**Tel: 01525 861416**  
[www.thebluecat.net](http://www.thebluecat.net)

Find us on Facebook @thebluecatcattery  
or email us at [enquiries@thebluecat.net](mailto:enquiries@thebluecat.net)

The Bluecat is a luxury cattery set in the quiet area of Jacques Lane in Clophill. With just 14 cat chalets, we have time to fuss, pamper and play with your cat to its heart's content whilst in our care. Please call for further information.

## Misty Double Glazing?

Over 30  
Years  
experience.  
FREE  
Quotes

Over 30  
Years  
experience.  
FREE  
Quotes

**KEEP YOUR WINDOW FRAMES...  
... WE JUST REPLACE THE GLASS!**

- UPVC • Aluminium • Or Wood

Because we replace just the glass the repair is a  
Fraction of the cost of a complete replacement window.



**mistydoubleglazing.co.uk**  
**QUALITY GLAZING SERVICES**  
**01525 876808**

**WE ALSO REPLACE BROKEN...**  
• Glass • Handles • Hinges & Locks  
**AND REPAIR...Patio Doors & Conservatories!**



## Your dream Holiday is my priority

Based in Silsoe, I am your local travel advisor. Allow me to arrange your next holiday with care and lose the pain of planning. I'll take care of every last detail so you can explore with confidence and make memories to last a lifetime.

*Neil Forrester*

TRAVEL COUNSELLOR

07479 479934

neil.forrester@travelcounsellors.com  
travelcounsellors.co.uk/neil.forrester

The logo for 'the café' is enclosed in a white square. It features the text 'the' in a lowercase, sans-serif font above 'café' in a larger, lowercase, sans-serif font. A stylized white fan-shaped icon is positioned between the two words.

the  
café

Eastcotts Park,  
Wallis Way,  
Bedford, MK42 0PE  
01234 266 366

Visit

[www.peacockscfe.co.uk](http://www.peacockscfe.co.uk)  
for more details on our opening  
hours and to view our full menu.

**W&H PEACOCK**  
AUCTIONEERS & VALUERS

# The Cafe at W&H Peacock is **OPEN**

View the salerooms for our upcoming auctions and  
then relax with a coffee and a slice of cake.

Our unique cafe in Bedford Auction Centre with free wi-fi  
comfortably seats over 100 customers. We serve cooked  
breakfasts, paninis and sandwiches, light lunches and  
snacks plus a range of hot and cold drinks.





# LOCAL ALLOY WHEEL REFURBISHMENT



**Tel:**  
**01525**  
**860069**

**Alloy Wheel Repairs**

**Diamond Cut Alloy Wheels Repaired On Site**

**Powder Coat Primers & Lacquers**

**Fast Turnaround Alloy Wheel Welding**

**Tyres At Competitive Prices**

**NEW for 2015 - 4 Wheel Alignment Service**

**[www.mintalloys.co.uk](http://www.mintalloys.co.uk)**

## Welcome to Clophill St Mary's C of E Lower School and Nursery

We are a small, friendly, village Lower School, graded "Good" by Ofsted (2021), with close links to the local community.

We welcome children from 2 years to 9 years, supporting and nurturing each individual child AND teaching them about life-long Values.

Wrap around care available for all ages (breakfast and after-school care).

### Acorn Nursery

Preschool provision in a beautiful bespoke building and outdoor space! Providing 30 hours free childcare entitlement with wrap-around care too!



**SPACES  
CURRENTLY AVAILABLE**



**EVERYONE is welcome at St. Mary's and you do not have to be a practicing Christian to attend our school.**

**We are first and foremost a Village School and Nursery-)**

To arrange a visit, please call: 01525 860206 or email: [generaladmin@clophillstmarysschool.co.uk](mailto:generaladmin@clophillstmarysschool.co.uk)

For more information visit: [www.clophillstmarysschool.co.uk](http://www.clophillstmarysschool.co.uk)

# Auction Sales & Valuations

Valuation, collection and auction service  
of individual items through to complete  
property and commercial clearances.

Call for a free no obligation quote or  
email [info@peacockauction.co.uk](mailto:info@peacockauction.co.uk)

## SALE ENTRIES NOW INVITED

Antique & Modern Furniture • Clocks • Books • Ceramics & Glassware • Pictures & Prints • Bicycles  
Jewellery & Watches • Collectables • Garage Tools & Equipment • Household Electrical Items • Office  
Furniture & Equipment • Retail Products & Stock • Vehicles • Horticultural & Commercial Equipment  
Building Materials • Garden Furniture & Effects

[www.peacockauction.co.uk](http://www.peacockauction.co.uk)



**W&H PEACOCK**  
AUCTIONEERS & VALUERS  
**01234 266366**



Eastcotts Park,  
Wallis Way,  
Bedford,  
MK42 0PE

## **AVENUE17TRAINING**

Experienced Training provider offering First Aid and Health & Safety training.

From Basic first aid to first responder level, dental BLS & ILS, fire safety

We can tailor courses to your sector requirements.

Regulated (RQF) and Vocational Technical Qualifications (VTQ)

A competitive price structure.

Contact us for a discussion or no obligation quote

[Mark@avenue17training.co.uk](mailto:Mark@avenue17training.co.uk)

07917729293

# A L & G ABBOTT

## Funeral Directors

~ Established 1832 ~



With you when it matters most

An independent family business providing care and professional services to Kempston, Bedford and surrounding villages.



- 24 Hour Personal Service
- Private Chapels of Rest
- Home Arrangements
- Pre-Paid Funeral Plans
- Green Burials
- Funeral Wishes
- Bereavement Support Groups  
**(free to anyone)**

☎ 01234 843222 🌐 [abbott-funerals.co.uk](http://abbott-funerals.co.uk) ✉ [support@abbott-funerals.co.uk](mailto:support@abbott-funerals.co.uk)

📍 150 Bedford Road, Kempston, Bedfordshire, MK42 8BH

Home  
is where the heart is  
*Let's keep it there™*



## Care in your home, just as you like it.

You may be in a situation where you need an extra pair of hands, or you may have complex needs that require dedicated care.

Our well-trusted care service ranges from a 30-minute daily visit through to full Live-in care.

**Call our friendly team today.**

Bluebird Care Central Bedfordshire

**01525 713389**

[bluebirdcare.co.uk/central-bedfordshire](http://bluebirdcare.co.uk/central-bedfordshire)  
[centralbedfordshire@bluebirdcare.co.uk](mailto:centralbedfordshire@bluebirdcare.co.uk)



# Residential Conveyancing

Experienced Local Consultant Conveyancer (Clophill)

**Michele Hosey**

**[michelehosey@photiades.com](mailto:michelehosey@photiades.com)**

**01525 300577**

Competitive legal costs, personable, efficient,  
strong communication, faster turnaround times

**Contact me for a free no obligation estimate  
or to discuss your specific requirements**

Recommended by Local Estate Agents

photiades solicitors  
FRIENDLY EFFICIENCY

L U N A

FINANCIAL PLANNING

How to use your pension pot wisely

## Do you have a plan?

Maybe you have several pension pots?

What about old employer's pension schemes?

We can help you make the right choice – either when you retire or to build your pot. You now have more choices than ever.

We make sure we take the time to understand your needs, goals and preferences before we make any recommendations.



For professional, friendly, financial advice contact us on:

01525 861803 | [john@hills-howson.co.uk](mailto:john@hills-howson.co.uk)  
Enterprise House, B52 Wrest Park, Silsoe MK45 4HS

Head Office | 4 North Road,  
Pontywaun, Newport NP11 7GA

Retire





# NEVILLE FUNERALS

We take care of the details, so you can say  
goodbye the way you want to.

NEVILLE. Because there is a difference.

## **AMPTHILL**

The Old Church, Flitwick Road MK45 2NT

t: 01525 406132

e: [amphill@nevillefuneralservice.com](mailto:amphill@nevillefuneralservice.com)

---

## **SHEFFORD**

24 Clifton Road SG17 5AE

t: 01462 813258

e: [shefford@nevillefuneralservice.com](mailto:shefford@nevillefuneralservice.com)

[www.nevillefuneralservice.com](http://www.nevillefuneralservice.com)



# HAPPY PLACE, RESTORED

If you love your lawn,  
you'll love GreenThumb.  
Our year-round treatments  
will give your grass  
the TLC it deserves,  
so you get a lawn you  
can feel good about.



**GreenThumb**  
LAWN TREATMENT SERVICE



Discover more at [greenthumb.co.uk](http://greenthumb.co.uk)

Scan  
here

Bedford & Huntingdon

01234 709345 or 01480 597432 [bedford@greenthumb.co.uk](mailto:bedford@greenthumb.co.uk)

Baths, Toilets &  
Showers  
Sinks and Taps  
Guttering  
Leaks and Burst Pipes  
Drainage  
Handyman jobs also



beta plumbing

Silsoe based  
No call out fee – free estimates  
Fully insured and guaranteed  
No job too small  
**07720 723653 01525 864859**  
[info@betaplumbing.co.uk](mailto:info@betaplumbing.co.uk)  
[www.betaplumbing.co.uk](http://www.betaplumbing.co.uk)

## TIM DOWNING

**Washing Machines Dishwashers Dryers Electric Ovens**  
**Repairs Servicing Sales**



Tel: Tim on Clophill 860148  
Mobile: 07969 545 276



A local family business offering a quality service at a competitive price

A member of the White Goods Trade Association  
Fully Insured Est. 1981

# Root 'n Branch

Your Local Friendly & Reliable Gardener

All aspects of Garden Maintenance undertaken  
• PRUNING • MOWING • WEEDING • PLANTING • HEDGING

Southfields, Shefford  
email: whooley@hotmail.co.uk

**Tel: 07771 537385**

Public Liability  
Insured



THE CONIFERS  
— CANINE HOTEL —

LUXURY  
ACCOMMODATION  
HOLISTIC FOOD SHOP



01525 860339

[www.the-conifers.co.uk](http://www.the-conifers.co.uk)



*Bathroom  
Vogue*

EST.  
1989

- Suppliers of traditional and modern equipment
- Working whirlpool & spa baths, power & steam shower systems on display
- Over 40 settings on display
- Complete installation service if required
- Personal friendly service from a family run business
- Wall and floor tiles
- Accessories
- Mirrors
- Bathroom furniture
- Heated towel rails
- Saunas
- Bathroom cabinets

**SHEFFORD 01462 627002**

[www.bathroomvogue.com](http://www.bathroomvogue.com)

Unit 4A, Shefford Industrial Park, St Francis Way, Shefford SG17 5DZ

# BURGLAR ALARMS

*New Alarms Fitted or Upgrade Existing Alarms*

## BURGLAR ALARMS

We fit New Alarms - Wired or Wireless Systems  
\*We can service and maintain your existing alarm\*

## CCTV

We fit high quality systems to maximise your security.  
Access your CCTV via the internet or mobile.

## DOOR ENTRY

We fit a range of quality video and audio intercoms  
to suit your needs.

*We are a family run business with over 35 years  
experience in home security and crime prevention.*



[www.maximumsecuritysystems.co.uk](http://www.maximumsecuritysystems.co.uk)

Contact:

**01582 864138 / 07746 111520**

*For a free quote and consultation*



# NEWBURY FARM PLANTS

Plant Inspiration

NEWBURY FARM, AMPHILL ROAD, SILSOE MK45 4HB

OPENING HOURS - WED - SAT 9 - 5 & SUN 10 - 4

TEL: 01525 860048

**WIDE SELECTION OF BEAUTIFUL GARDEN PLANTS**



**RHS Gold Medal Winner 2023**

**NEW Pilates** classes based in **Houghton Conquest village**. Small group classes to ensure correct posture and alignment in a friendly **private studio**.

All abilities and ages welcome with equipment provided. Classes are 45 mins in length, including a warm-up, main session and closing stretch.

**Pilates is a low impact** form of exercise which is kind on the joints. Focusing on strengthening the **deepest core muscles** which support and wrap around the spine. There are many benefits to Pilates including the easing of lower back pain and reducing stress and anxiety.

- **Group Mat Classes** – Mon, Wed, Thurs & Friday 9.30am/10.30am, 6.30pm/7.30pm
- **121 Mat Pilates** Sessions available at request
- **121 Reformer sessions** – Body Control qualified, please enquire for available times
- **DM on Facebook, Instagram or email** – [info@thepilatesbox.co.uk](mailto:info@thepilatesbox.co.uk)



**AMPTHILL & FLITWICK PHYSIOTHERAPY CLINIC**

Tel: 01525 720882

[www.chartered-physiotherapy.co.uk](http://www.chartered-physiotherapy.co.uk)

[Info@anfphysio.co.uk](mailto:Info@anfphysio.co.uk)

**1 Kings Road Flitwick MK45 1ED**

**Helping you get back on track**

We offer the very best hands-on physiotherapy treatment



Neck/ Back/ Shoulder/Knee pain

Headaches/Migraines/Sciatica

Arthritis and all joint pain

Whiplash/RSI/Osteoporosis/Sports injuries

Vertigo and dizziness/Posture training and ergonomics

Long Covid

**WE ARE PROVIDERS FOR MOST INSURANCE COMPANIES**

**We also offer complementary treatments:**

Acupuncture/Chinese medicine

Clinical Psychology/Deep Tissue Massage

## Hire Clophill Village Hall



Wedding Receptions  
Birthdays & Special Occasions  
Dances and Discos  
Club & Community Meetings & Activities

Phone: 07821 643 936

Mail: [Clophill.villagehall@gmail.com](mailto:Clophill.villagehall@gmail.com) Web: [www.clophillvillagehall.co.uk](http://www.clophillvillagehall.co.uk)

## ROGER STOREY

**YOUR LOCAL PAINTER AND DECORATOR**

Friendly and Reliable Service

Many Years Experience

Please phone: **01525 861253** or **07800 777615**

## ANDREW BAKER WINDOWS

9 SHEFFORD ROAD  
CLOPHILL BEDS  
MK45 4BT

SPECIALISING IN UPVC WINDOWS,  
DOORS, CONSERVATORIES,  
FASCIA, SOFFITS, GUTTERS AND  
CLADDING. ALSO AVAILABLE FOR CARPENTRY  
WORK. NO JOB TOO SMALL OR LARGE.

20 Years experience.  
Free local quotes.

**FENSA**

Fensa Registered  
FIVE YEAR GUARANTEE

Contact Andrew: 01525862804 / 07825017855

Email: [abakerwindows@gmail.com](mailto:abakerwindows@gmail.com)





**WOBURN COUNTRY FOODS**  
**THE GOURMET BUTCHER**

**HAYNES WEST END - WOBURN SANDS**

**THE FARM SHOP,  
HAYNES WEST END**

WEST END FARM, HAYNES WEST END, MK45 3RA  
BUTCHERS HOTLINE - 07845141969

**FROSTS FOODHALL  
WOBURN SANDS**

NEWPORT ROAD, WOBURN SANDS, MK17 8UE  
BUTCHERS HOTLINE - 07754215335

**ORDER ONLINE**

**WOBURNCOUNTRYFOODS.COM**

*Family Friendly, warm and  
welcoming golf club where  
everyone is welcome*



**Cainhoe Wood**  
GOLF CLUB

Brand New Seasonal Menu in our friendly clubhouse  
which is welcome to all!



New Sunday Menu  
perfect for all the family!



Sky Sports showing all the  
big sporting events!

JOL Golf Academy - individual and group  
lessons available from Beginner to  
Advanced!

Winter Prices: £17.50 Midweek  
£22.50 Weekend for 18 holes  
on our beautiful Manor Course



[www.cainhoewoodgolf.co.uk](http://www.cainhoewoodgolf.co.uk)



**01525 860800**



# Advertisers index

<b>Auctioneers &amp; valuers</b>		<b>Garden</b>		<b>Print Services</b>	
W&H Peacock	33	Green Thumb Lawn Treatment	37	Fidelity Design & print	IFC
<b>Bathroom Services</b>		JK Garden and Landscape Services	29	<b>Public Houses</b>	
Bathroom Vogue	38	Newbury Farm Plants	39	The Stone Jug	21
<b>Builders &amp; Carpenters</b>		Root 'n Branch	38	<b>Repair Services</b>	
PURE joinery solutions	27	<b>Health &amp; Beauty</b>		Tim Downing Repair Services	37
Stuart Benson Building Projects	IFC	Bluebird Care	34	<b>Schools</b>	
<b>Car Services/Repairs</b>		Amphill & Flitwick Physiotherapy	40	Clophill PreSchool	BC
A&F Motors Ltd	IFC	Pilates Box	40	Clophill St Mary's C of E	32
Mint Alloys	32	Tracy's Scentsy Treasures	24	Acorn Lower School and Nursery	32
TC Coomber Car Services	BC	Tammy's Talons	27	<b>Sport</b>	
<b>Choirs</b>		Tribe Strength Gym	25	Cainhoe Wood Golf Club	43
Greensand Community Choir	30	<b>Home Improvements</b>		<b>Security Services</b>	
<b>Computer Services</b>		Christopher The Painter	29	Maximum Security Systems	39
PCLap Repairs	27	David James Kitchens	24	<b>Travel Services</b>	
<b>Electrical Services</b>		Roger Storey - Painter & Decorator	41	Travel Counsellor	31
APN Electrical	24	<b>Legal</b>		<b>Tuition</b>	
<b>Financial Services</b>		Photiades Solicitors	35	Avenue17Training	33
ET Accounting Services	28	Shaw's Wills	23	Wrest Park Tutors	28
LUNA Financial Planning	35	<b>Pet &amp; Animal Services</b>		<b>Village Hall</b>	
MB Accounting Services	21	The Conifers Canine Hotel	38	Clophill Village Hall	41
The Mortgage Expert	28	The Bluecat Luxury Cattery	30	<b>Windows/Replacement</b>	
<b>Food &amp; Refreshments</b>		Amphill Veterinary Centre	22	Andrew Baker Windows	41
Café at W&H Peacock	31	Freyas Dog Grooming	27	AW Windows	IBC
Woburn Country Foods	42	Stray Cat Rescue	27	Kings Windows	29
The Avenue Kitchen	26	<b>Plumbing &amp; Drainage Services</b>		Misty Double Glazing	30
<b>Funeral Services</b>		Jamie, the happy plumber	29		
AL&G Abbot, Funeral Directors	34	Beta Plumbing	37		
Neville Funeral Service	36	Chapman & Kirby Heating	21		

*IFC = Inside Front Cover IBC = Inside Back Cover BC = Back Cover*

## Love reading Spotlight?

Don't forget to mention us when you use a business that advertises in this magazine!

**This space is available for a new Advertiser.**

For more information and pricing please either email [ads@clophillspotlight.co.uk](mailto:ads@clophillspotlight.co.uk) or submit the contact form on the Spotlight website:

[www.clophillspotlight.co.uk/advertising-contact-form/](http://www.clophillspotlight.co.uk/advertising-contact-form/)

## NO PRESSURE SALES – YOU DEAL WITH THE OWNER FROM START TO FINISH



- ✓ A-rated windows as standard
- ✓ Composite doors
- ✓ High security
- ✓ Bifolding doors
- ✓ Conservatories
- ✓ Fascias, soffits and guttering
- ✓ Insurance-backed guarantee
- ✓ Fensa certificate



**Contact: ANDY WOOD**

**01582 536944 or 07796 272539**  
**sales@awwindows.co.uk**



See reviews from satisfied customers at [awwindows.co.uk](http://awwindows.co.uk)

# Clophill Preschool

We are a unique outdoor setting based in the rural grounds of Clophill Village Hall welcoming children from the age of 2 and offering a bespoke SEND provision.

Our passionate and experienced staff nurture every child and broaden their perspective, enrich their knowledge and spark the magic of wonder through a curriculum based in nature.



**Ofsted**  
Outstanding  
Provider

Call or email to find out more

07765 887868 or 07936 006381  
clohillpreschool@gmail.com  
www.clohillpreschool.co.uk



Find us on  
**Facebook**

**TJ Coombes**

**MOT'S CLASS 4/5L/7**  
**CAR SERVICING & REPAIR**  
**TYRES & EXHAUSTS**  
**AIR CONDITIONING**  
**DIAGNOSTIC CODE READING**

**Collection  
& Delivery**  
SERVICE AVAILABLE  
Please ask

**AMPHILL**  
**01525 406330**

UNIT F, AMPHILL INDUSTRIAL ESTATE, STATION ROAD, AMPHILL, MK45 2QY