

CLOPHILL SPOTLIGHT

OCTOBER 2016



**LOVE YOUR
LOCAL NEWS**

AMPTHILL PRINT CENTRE

DIGITAL PRINTING
DESIGN & MARKETING
DIRECT MAIL

and much more...

...and we're right on your doorstep at

Unit 24 Station Road Ind Est, Ampthill, MK45 2QY
(Just off the A507 Ampthill bypass, past the Post Office)

WE PRINT...

- Stationery
- Newsletters
- Menus & Tent cards
- Brochures
- Flyers & Leaflets
- Catalogues
- Books & Booklets
- Direct mail
- Training Manuals
- Banners & Posters
- Greeting cards
- Calendars
- Labels & Stickers
- NCR pads
- Folders
- Exhibition panels
- CD/DVD duplication
- Photocopying

3 DAY STANDARD SERVICE | SAME DAY AVAILABLE

www.fidelityprint.co.uk

Get a quote 01525 300001 quotes@fidelityprint.co.uk

fidelity[®]

Unit 24 Station Rd Ind Est, Ampthill



D. Andrews
P. Fleckney

MOTORS LTD

Tel: (01525) 860292

Tel: (01525) 404919

208 Clophill Road, Maulden, Bedfordshire MK45 2AF
89 Oliver Street, Ampthill, Bedfordshire MK45 2SA

**CAR AND COMMERCIAL VEHICLES
ALSO CLASSIC & AMERICAN CARS
SERVICING – REPAIRS – BREAKDOWN
SPRAYING – M.O.T.**



Stuart Benson Building Projects

Design, Build and Maintenance including Interior Refurbishments,
Kitchen / Bathroom fitting, Tiling, Flooring, Skirting boards, Doors
Garage conversions. Exterior Decking, Patios, Driveways
Garden Offices/ Sheds

Tel: 07946 579862 or 01525 403083

Email: benson.stuart@.googlemail.com



A word from the Editor...

Hello!

So here we are in October and we have another great issue of Spotlight packed with news, information and events in and around Clophill.

At the end of the month, of course, it's Halloween so check out the **free Pumpkin Festival** at the Old Church on the 29th – along with pumpkin carving there'll be face painting, dance displays, a BBQ and stalls.



Also this month it's **Chocolate Week** from 10th to 16th October. As a chocoholic, I'll be getting involved and eating as much chocolate as I can get my hands on! You might also want to know that from 15th to 30th it's the **Family Learning Festival** and there'll be lots of activities going on nationally to help families learn together.

See you back here in November!



The magazine staff

EDITOR/ADVERTISING MANAGER	Helen Gent editorial@clophillspotlight.co.uk ads@clophillspotlight.co.uk	864836
DESIGN MANAGER	Chris Abrahams cmabrahams@yahoo.co.uk	
DISTRIBUTION MANAGER	Pete Liddle	860113
TREASURER	Richard Pearson	861110
COPY DEADLINE	20th of the month	

Don't forget you can now read Spotlight online at
www.clophillspotlight.co.uk



CLOPHILL ECO LODGES Upcoming events



Pumpkin Festival

Come and pick a locally grown pumpkin to carve with us while enjoying face painting, cakes, stalls and more.

29th October 1pm – 5pm
FREE

Macbeth Performance

The English Gardner Theatre Company will be performing Shakespeare's Macbeth at the Old Church (for ages 13+ only!).

Macbeth from 6.30pm
£7 per ticket
£5 for early birds



Pop Up Café & Pumpkin Carving

Our Nest will be turned into a Pop Up Café for the afternoon and children (& Adults!) can carve locally grown pumpkins to take home.

30th October 2pm – 5pm



Christmas Wreath Making

Start the festive season with some natural craft creations for your front door. They will definitely be unique. A glass of mulled wine also helps the creativity.

3rd December 10.30 – 1.30
£22 Adult £5 Child

Christmas Craft Market

Kick off December in a festive way. Come and get those 'hard to buy for' friends a present from one of our many local artisan and craft stalls while you enjoy a mulled wine and some festive music.

4th December 1pm – 5pm
Free Entry
Stall Spaces still available

Eco Lodges, Clophill, Bedfordshire MK45 4BP



Come and stay at the Eco lodges and enjoy great views, tranquillity and some good food.

www.ClophillEcoLodges.org.uk

Tel.07935911207

Booking enquiries: info@clophillheritage.org

[Facebook.com/Clophillecolodges](https://www.facebook.com/Clophillecolodges)

Twitter:@clophilleco



Annual Healing Open Day

Sunday 6th November, 11am-4pm

Healing Centre, Enterprise House, Wrest Park, Silsoe

Come and celebrate Gentle Touch Healing's 19th anniversary and receive free healing and free therapy advice.

Free admission, with refreshments provided.



News from Clophill Heritage Trust



Spies and Coders Weekend

Last month we held a Spies and Coders weekend and participants had a great time and learnt a lot. The weekend began with a trip to Bletchley Park via the Millbrook community train plus a tour of the national computing museum. In the evening, dinner was served fine dining style in the Nest at the Lodges by our local supporter Oli Swain, who had developed a delicious Bond theme for each course. After a hearty Sunday breakfast, made by wardens Kayleigh and Emily, the group set off to the Henlow Signals museum to do some code breaking then went onto Chicksands Priory to see one of the region's 'Y' stations. A very big thank you to all our guides and chefs.

Outdoor education and enjoyment

Amongst our other aims The Trust seeks to provide 'outdoor education and enjoyment' for local organisations,

schools and communities as well as for the residents of Clophill. In September, serving **military personnel from Chicksands Base** sent a team of four volunteers to spend a half day at the Old Church site carrying out ground maintenance. They're hoping to work with us on a regular basis in the future.

Last month we also welcomed our new **post-graduate volunteer** from Silsoe, James, who's helping out with a range of work over the next 12 months whilst he applies for his graduate job.



September also saw the start of weekly Wednesday afternoon visits from The Oracle Middle School, Pulloxhill, which is for children with special needs/learning difficulties. Together with their teachers, they'll be introduced to **landscaping, gardening and outside activities** all designed to create enjoyment with education.

Want to become a volunteer? Contact: Kayleigh Waight (*07889 980872*), Ali Bradbury (*07894 710001*), John Wright (*07860 839845*) or Barry Breed (*01525 860834*).

Find us at www.ClophillEcoLodges.org.uk and on Facebook.
For bookings, get in touch at info@ClophilHeritage.org

Remembering Clophill's Fallen

Continuing our series of the centenary of Clophill's brave men who lost their lives in the First World war, this month we focus on George Maddams and Horace White, who both died at the age of 19.

John George Maddams (known as George) was born in Clophill in 1897. In 1911 he was living with his parents, John (a farmer) and Maria, at Brickwall Farm, Old Kiln Lane. George was at school and had five siblings. (An ancestor through an aunt's marriage was Thomas Chapman, Premier of Tasmania in the 1860s.) George left for France in July 1916. George's brother, Arthur, who was born in 1898, joined the Machine Gun Corps in 1917. Arthur lived until 1992.

George enlisted in Bedford, initially joining the 3/12th London Regiment and then the 22nd Battalion County of London (The Queens) Regiment. In the autumn of 1916 the 22nd Battalion fought on the Somme in the Battle of Flers-Courcelette, the Battle of the Transloy Ridges and in the attacks on the Butte de Warlencourt. He died of wounds on 10th October 1916, and is commemorated in Dernancourt Cemetery, Somme, France.

Amphill News reported in October 1916: 'The sympathy of the village goes out to Mr. and Mrs. John Maddams in the loss of their oldest son, Pte. George Maddams, who has been killed in action in France... He was a good sportsman, and took a keen interest in cricket and other outdoor games. He is the fourth Clophill man who has paid the supreme sacrifice for the country.' And later... 'In the Parish Church on Sunday evening



Plaque in St Mary's church. It's believed that OBG stands for Old Bedford Grammar School where George had been a pupil.

a memorial service was held for the three Clophill men who have lately fallen in the service of their country. They are Sgt. Arthur Huckle and Private Percy Eddy, both of the Bedford Regiment, and Private George Maddams. At the close of the service the organist played the Dead March in Saul, the large congregation standing the whole while.'

Arthur Huckle isn't mentioned on Clophill's memorial. He was born in 1884 and lived in Great Lane, moving to Haynes before 1911 by which time he was married to Ellen and had four children. He worked as a cowman. He later moved to Biscot. Arthur became a sergeant in the 8th Battalion, Bedfordshire Regiment, and was killed in action in the Somme on 15th September 1916. He's remembered on the memorial in Legrave.

Horace White was born in 1897 and in 1911 was living with his parents, Frank and Sarah, and two of his siblings, at 4 The Strand, Clophill. He and his father were agricultural labourers. In 1911, along with Charles Gudgin, he'd passed the Midland Counties Union Rural Arithmetic examination whilst at evening school and had also been a Boy Scout.

Horace enlisted in November 1914 joining the Bedfordshires; he later became a Private in the 13th (3rd South Downs) Battalion Royal Sussex Regiment. He was sent to France in July 1916.

The 13th Battalion were involved with the capture of part of the Regina Trench which was a German trench dug along a ridge from the village of Le Sars, Somme, to Stuff Redoubt, close to the German fortifications at Thiepval. It was the longest such trench on the German front. Attacked several times, a section was briefly controlled but regained by counter attacks.



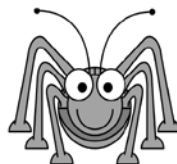
Photo of the 13th (3rd South Downs) Battalion Royal Sussex taken in 1915

An attack later also failed; on 21st October several divisions attacked the western part of the trench, and briefly gained footholds but were again pushed out by German counter-attacks. After two months of attacks and constant shelling the trench was finally taken in November.

Horace was killed in action on 21st October 1916 and is commemorated on the Thiepval Memorial, Somme, France.

Ampthill News wrote in November 1916: 'The relatives of Pte. H. White have been officially informed that he was killed on the Somme. Pte. Whittamore, of Campton, in writing home stated that he was sorry to hear that his mate, Pte. H. White, was killed. Great sympathy is felt for his parents.'

CLOPHILL METHODIST CHURCH



BEETLE DRIVE

Saturday 12th November 2016

6.30pm

Adults £5 Children £2.50

Refreshments



In aid of
Clophill Methodist Church

tel: 01525 860695





St Mary's School News

I'm pleased to report that all our children came back into school full of energy and enthusiasm for the new school year. I was particularly pleased to welcome our new children into Nursery and Reception but also the three other children who joined us in Year 4 and Year 2. Everyone seems to have settled in well.

At the beginning of term Year 4 started their five-week swimming course at Hilltop – thank you to Hilltop for once again welcoming our school and organising the session very thoroughly. On 23rd September, the children came into school in their jeans in exchange for a £1 donation towards '**Jeans for Genes**' – I'll report back on how much was raised for this very worthwhile charity.



This month we've had '**PJ**' day, when the children came into school in their pyjamas in exchange for a bottle of wine for the 'Barrel of Booze' and 'Wine and Water' stall at our **Firework event**, which will be held on 5th November. During October, choir children will be singing at the Diocesan Harvest Service at St Albans Abbey and FOSM are hosting another 'Movie Night'. And on the 21st we're having another non-uniform

day to raise money for Stand Up To Cancer. I'd like to thank our parents in advance this year as they are always very generous in supporting our fund-raising events.

Our values for October are *Faith, Hope & Trust*

As members of a Church of England school, faith is central to our lives. We'll be thinking about our own Christian faith, the faith of people from other major religions and why faith is important. For 'Hope', we'll be encouraging the children to be optimistic and learn to overcome setbacks by believing that they have both the will and the way to achieve their goals, whatever they may be. We'll also be thinking about what it means to trust someone and how it feels to be trusted.

School Admissions 2017

If you have a child requiring a place either in Reception or Middle School for September 2017, you can now access the application process on the Central Bedfordshire website at www.centralbedfordshire.gov.uk/schoolladmissions

- **The deadline for applications for lower, primary and middle school places is 15 January 2017.**

If you're unable to apply online, please contact Sharon for a paper copy application form.

Samaritan's Purse Christmas Shoebox Appeal

If anyone in the village would like to prepare a shoe box please go to www.operationchristmaschild.org.uk for information about what to put in the boxes and to download a label. Donated shoe boxes need to be in school by 1st November.



Acorn Nursery News

Welcome to our new children and their families: Edith, Tyler, Emma, Braydon, Jessica and Maia. The children have all settled in really well and as we have started the term off with a theme of **'Me and my World'** are looking forward to getting to know the children (both old and new) and their families a little better. We're glad to see that every family is now using Tapestry, our online journals, and new parents have expressed how nice it is to see pictures of their child on their first day at the nursery.

So far this term we've discussed events over the summer holidays, made pictures of our family members using shapes, made salt dough hand prints, decorated life-size drawings of ourselves and made our houses out of boxes.

Looking forward we'll be thinking about what we'd like to be when we grow up, leading on to our next theme of **'People who Help Us'**. If anyone would like to come in and talk about their occupation to the children, please contact the school office or Joy in the nursery.



Bedfordshire
Cambridgeshire
Northamptonshire

QUIZ NIGHT

Friday, November 25th, Maulden
Village Hall
7.15pm for a 7.30pm start

Join the Wildlife Trust local group and the Greensand Trust for a fun evening and a bit of a challenge. Pit your wits and see who'll emerge victorious.

Teams of four to six. We can match people to teams if needed.

Fish supper* and a glass of wine (or juice or beer). £10 per person.

Come along for a fun evening and help
support local wildlife activities.

[*Vegetarian option available, please request at time of booking.]

Open to all, but please reserve as space is limited.

Email flitvale.info@gmail.com or ring Ann on
07890 347327 between 6pm and 8pm

Christine's quick 'n' easy recipe



Roast Pork Loin with Fresh Chestnuts and Wild Mushrooms

INGREDIENTS Serves 4 people

- 1 kg pork loin rolled and tied
- 2 medium onions, roughly chopped
- 200g chestnuts, cooked and peeled
- small glass of dry white wine
- 2 fresh bay leaves
- 1 clove of garlic
- 200g wild mushrooms
- extra virgin olive oil
- salt & freshly ground black pepper

1. Peel the clove of garlic and cut into thin strips.
2. Pierce the pork loin at intervals and insert a sliver of garlic.
3. Heat a generous splash of olive oil in a large saucepan. When hot add in the pork loin and brown on all sides.
4. When the pork is nicely browned deglaze the pan with the white wine.
5. Add in the whole cooked chestnuts, chopped onions and bay leaves with $\frac{1}{2}$ litre of water. Cook the pork for about 45 minutes, turning from time to time to ensure uniform cooking.
6. Remove the pork from the pan and add the wild mushrooms. Cook for 15 minutes to cook the mushrooms and reduce the pan juices. Season to taste.
7. Thinly slice the pork loin and serve covered with the chestnuts, mushrooms and pan juices.



CLOPHILL TODDLER GROUP

Understanding the importance of a child's play

LOTS OF TOYS, SPACE AND FRIENDS
FOR BABIES AND TODDLERS UNDER 3

FRIDAYS 10am – 11.30am at the Village Hall
See 'Village Groups' for contact details



Clophill Preschool News

Hi everyone As we start our new academic year, the fourth for Clophill Preschool, we reflect on our setting and what we offer our children and their families. We strive to give all of our children the best care and education; we ensure every child has the equal opportunity to join in whatever activities we offer. We believe that communication is key to keeping our parents as partners in this important part of their child's life.

Through our many combined years of experience in both teaching and learning we've come to recognise the most important factors that parents seek and should expect from their child's provision and we hope we reflect these in our setting.

When we decided to create Clophill Preschool we were essentially starting from scratch so we drew from what we knew as practitioners and, perhaps more importantly, as parents ourselves. What we've also come to realise is that we're a business just the same as any other setting or school. As a result, the families are our customers – their valued opinion is something we listen to, as this can often lead to changes that improve our business.



In November, **we'll be applying for Millie's Mark**, which is an 'accreditation of excellence in paediatric First Aid'. Millie's Mark is named after Millie Thompson, who tragically died as a result of choking on food at a nursery in Stockport in 2012. Her parents, Dan and Joanne Thompson, set up Millie's Trust in her name. The Trust proposes that all newly qualified Early Years staff counted in the child/adult ratios should be trained in paediatric First Aid – as opposed to current guidelines (which are due for review) that state that only one member of staff needs to be First Aid trained.

We have a habit of raising our standards above the expected and sometimes required levels. From the comments we get from parents, the ideas that come to us from the children and all the professional articles we read, we are able to put in place a structure for how we run our setting to ensure families receive the level of care and education we'd expect for our own children.

Safeguarding is our highest priority in Preschool. All staff have an enhanced DBS check and receive regular supervisions throughout the year, as is now required by the government. We have clear procedures for drop-off and pick-up times to ensure the safety of all children. Our setting is constantly reviewed for health and safety – for example, children can jump on the trampoline but they all know it's only one at a time and they use the timer accordingly. If you have full control of your setting and you treat your children with respect and give them the tools to learn how to deal with their environment you're setting them up for life.

We also give advice and support to families and children who have a particular need. Each and every child is unique, and it's our job as practitioners to support each child, to nurture and care for them. Some children may need just that extra bit of help settling in or it may be a long-term need. And of course for those children who excel in certain areas, we are there to encourage them and allow their gift to flourish.

- Get in touch with Imogen on **07765 887868** or Chris on **07936 006381** or visit www.clohillpreschool.co.uk

CLOPHILL ECO LODGE'S Pumpkin Festival

Saturday 29th October 2016
1pm - 5pm



Come and select a locally grown pumpkin and carve it with us while enjoying all the fun of the festival

Tumbling Teddy
Bring your brave teddy to see how far they will go off the top of the tower
Prize of each bulls eye!

Pumpkin carving
Pony rides
BBQ
Face painting
Dance displays
Café and bar
Children's dress up competition at 4pm



And for the brave!
The spooky play
Macbeth
Starts at 6.30pm
(13yr +)
£5 early birds and £7 on the door

Clophill, Bedfordshire MK45 4BP
www.ClophillEcoLodges.org.uk
Tel. 07935911207

Booking enquiries: info@clophillheritage.org
[Facebook.com/Clophillecolodges](https://www.facebook.com/Clophillecolodges)
Twitter: @clophilleco



Clophill & District Flower Club



A Celebration in Flowers

To celebrate their Ruby Anniversary this year, Clophill & District Flower Club staged a spectacular flower festival at St. Mary's Church over the weekend of 17th and 18th September.

The theme of the festival, entitled **'90 Glorious Years'**, was the life of HM Queen Elizabeth II.

Members of the flower club had spent months planning the 26 floral exhibits, each portraying a different aspect of the Queen's life and reign, and the result was a church filled with beautiful and imaginative displays.

After pausing to admire 'Windsor Horse Show' outside the church visitors entered through the church porch which was filled with an abundance of arrangements in ruby red to celebrate 40 years of friendship and flowers for Clophill & District Flower Club.

Once inside the church the scent of flowers filled the air and visitors were treated to exhibits



which celebrated **'The Coronation'**, **'Royal Wedding'**, **'State Opening of Parliament'**, **'Summer at Balmoral'** and much more.

The arrangers showcased their skills and talent with flowers ranging from beautiful English roses to the more exotic anthurium and king protea used in the 'Caribbean' and 'India' exhibits.

All the exhibits were generously sponsored by donations from local businesses and individuals.



After admiring the arrangements visitors

were able to enjoy delicious homemade cakes with tea and coffee while listening to organ recitals from a number of local organists.

It was a wonderful way to spend a few hours celebrating two special occasions for our community and our country.





Rotary Club of Barton le Clay's famous
GastroQuiz

The quiz that tickles your tastebuds



Silsoe Village Hall

Saturday 12th November, 7.30pm prompt

**Tickets £12 per head, includes supper.
Bring your own wine, glasses etc.**

Contact 07951 720103 for tickets

**Proceeds in aid of charities: ShelterBox (Italy appeal),
Tools for Self-Reliance and Carers in Bedfordshire**



The World's Biggest Coffee Morning

Thank you to everyone who supported the coffee morning held at St. Mary's Church on Saturday 24th September in aid of **Macmillan Cancer Support**

The event was a big success and raised **£521.13** for the charity

What's on in and around Clophill

OCTOBER

 **Saturday 29th**
Pumpkin Festival 1pm-5pm, Clophill Old Church. *See this issue for full details.*

 **Saturday 29th**
Macbeth 6.30pm, Clophill Old Church.
See this issue for full details and ticket prices.

 **Sunday 30th**
Pop-up Cafe and Pumpkin Carving 2pm-5pm, Clophill Old Church.
See this issue for full details.

NOVEMBER

 **Saturday 12th**
Beetle Drive Clophill Methodist Church, 6.30pm.
See this issue for full details.

 **Saturday 12th**
Gastroquiz Silsoe Village Hall, 7.30pm. *See this issue for ticket details.*

 **Friday 25th**
Quiz night Maulden Village Hall, 7.15pm. *See this issue for full details.*

On throughout the month...

Wednesdays...

- **'Tea and Chat'** 10.30am-noon, Clophill Methodist Church Schoolroom
- **Zumba Toning** 8pm-9pm, Clophill Village Hall

Fridays...

- **Clophill Toddler Group** Clophill Village Hall, 10am-noon. See 'Village Groups' for contact details

One Saturday a month...

- **Messy Church** 4pm-6pm, Clophill Methodist Church, 15 October; 19 November; 17 December. All-age craft activities, worship and a meal for all the family. No fixed charge, donations welcome, children must be accompanied by an adult. See 'Village Groups' for contact details.

If you have any diary dates that you would like included on this page, please email clophillspotlight1@hotmail.co.uk

CLOPHILL COMMUNITY CARE (C3)
07791 773 705

2016 Annual General Meeting

Clophill Community Care will be holding its AGM on **Wednesday 2nd November** in the Methodist Schoolroom, starting at 10am. The meeting is open to all Clophill parishioners.

Clophill Parish Council

Notes from the Parish Council meeting held on 27th September

These notes are a resume only. Official minutes are available on the internet and notice boards. All official correspondence should be sent to the parish clerk and not individual councillors.

Outdoor gym equipment

Following on from the success of the new play equipment at our Rec ground, there has been some funding allocated to Clophill Parish Council to go towards 'outdoor gym equipment'. This will be suitable for adults and teenagers, and we feel it may encourage more people to use our outdoor spaces to keep fit and healthy. We'll share more details about this equipment once we have installation dates.

Parking at The Green

Cllr Downing and Cllr Brough have been discussing with Central Bedfordshire Council (CBC) the parking arrangements at The Green and the installation of a crossing point between the Green Man and The Green. CBC has agreed to these changes, as well as the carrying out of 'patching' of the road surface before painting new parking lines. Work should be completed this Financial Year and these safety features will be matched by improved speed monitoring at the east end of the village. Further, the work we've done has also led to CBC creating greater awareness of the village's accident hot spots at The Causeway and Warren Lane by more obvious road markings.

Dog fouling

Clophill Parish Council has decided to place new posters up around the village, as part of our efforts to tackle dog fouling. Nine out of 10 dog owners clean up after their dog, but one in 10 is still too many. The penalty for committing an offence contained in a Dog Control Order is a maximum fine of £1,000. Alternatively, the opportunity to pay a Fixed Penalty Notice of £80 may be offered in place of prosecution. This can be reduced to £50 if paid within 14 days.

Schools admissions

Central Bedfordshire Council has asked us to highlight that parents who wish their children to start school in September 2017 need to register their child before 15th January 2017. Children born between 1st September 2012 and 31st August 2013 should apply for a Reception Year place in the 'Starting School 2017' round. Parents can register their child online at www.centralbedfordshire.gov.uk/school/admissions/2017/starting-school/apply.aspx

Hedge clearing volunteers needed

Cllr Louise Hodge has asked again if any Clophill villagers would like to help clear the hedge line/bank and undergrowth on the Rec. If anyone is interested in helping over the winter months contact Louise on louisehodgeclophillpc@gmail.com or call 07900 696103.

Maulden's Co-op closure

A brief update from our neighbouring village, Maulden. Its Co-op, which we know to be well used by our own parishioners, is closing down in the next few months and is being reopened as a Budgens shop. Initial plans suggest this new shop will include an in-store bakery.

CPC resignation

Our Parish Clerk, Lyn Lyman, has resigned from her post at Clophill Parish Council. As a Parish Council we wish to thank Lyn for all that she has done over the years for us.

Clophill Parish Council

Continued

Planning

CB/16/03850/FULL

Location: 95 High Street

Proposal: To construct a four-bed detached house within the garden of the current detached bungalow. The entrance would be through the existing electrically operated gate now in situ. The site is within the village settlement area. The house proposed will be set back virtually out of site from the High Street and won't alter the street scene. **SUPPORT**

CB/16/03474/FULL

Location: Land south of Top Farm, Shefford Road.

Proposal: Erection of new barn and a stable block of six stables. The size of the units within this application begs the question of whether this is for personal use or for wider commercial use. The Parish Council offers conditional support in that if approval is granted it will be for the owners' personal use, not extended for commercial enterprise and sub-letting. **CONDITIONAL SUPPORT**

CB/16/03866/FULL

Location: Land adjacent to 15 Jacques Lane

Proposal: Erection of three dwellings. This site is outside the village settlement area. It's a narrow lane that already has some difficulty with traffic and agreeing to this proposal would create a precedent. **OBJECT**

CB/16/03953/FULL

Location: 24 Bedford Road

Proposal: Erection of a single-storey extension. This is one of several large houses that have big gardens to the rear. There have been other similar extensions. **SUPPORT**

CB/16/03360/VOC

Location: Clophill Eco Lodge, Church Path

Proposal: This is an application to alter previous applications to include civil wedding ceremonies. This will provide vital financial support for this project. The remedial work to the Old Church and the new Eco Lodges with the residential warden has had a dramatic effect on crime and anti-social behaviour at this location. It's to the benefit of the village that we continue to support. **SUPPORT**

CB/TCA/16/00337

Location: 97 High Street

Proposal: Fell seven conifers to the side and rear of this property. The hard wood trees to the garden aren't being felled. The conifers aren't an indigenous species and add nothing to the street scene. **SUPPORT**

The next Parish Council meeting will take place in the village hall at 7.45pm on Tuesday 25th October with a surgery at 7.30pm



THREE KINGS CHRISTMAS TREES

Fresh Cut Christmas Trees

Direct from the Grower

Please come and visit us and have a look around

All trees are displayed inside

Opening from:
MONDAY
28th November



9 am – 6pm
7 days a week

GROWS WELL

SEVEN ACRES NURSERY, SHEFFORD ROAD,
(BEADLOW) CLOPHILL. SG17 5PL

Parish Registers for October

1816

Baptisms

October 13 Ann Parish (?)
October 27 John Appleby (father, blacksmith)

Marriages

October 9 William Wittal (?)
to Elizabeth Eno (?)
October 31 Joseph Mann to Maria Millard
Thomas Barnard to
Catherine Waller (?)

1866

Baptisms

October 7 George White
Elizabeth White

Burials

October 3 Elizabeth Garner, 47

1916

Baptisms

October 15 Vera Florence Denton

Burials

October 17 Henry Grummitt, 77

1966

Marriages

October 8 Paul Andrew Nicholls, 23, to
Barbara Ann Ellingham, 18

ST MARY'S CHURCH REGISTERS FOR AUGUST & SEPTEMBER

Baptisms

August 28 Ellie Jo Mullan
Harry Brian Lawrence Mullan

Funeral

September 19 Peggy Doreen White, 92

Useful numbers

Gas (Emergency)		0800 111999
Electricity (Emergency)		0800 7838838
Emergency Fire/Police/Ambulance		999
Water/Sewage (Anglian Water)		0845 7145145
Telephone	(Customer Services) 150	(Faults) 151
Highways Department (Central Bedfordshire Council)		0300 3008049
Benefits Agency (Bedford office)		01234 361500
Registrar's Office (Births/deaths/marriages)		0300 3008089
Rail (Enquiries)		0845 7484950
Buses 01234 262151	(Link A Ride) 01525 840511	(Flittabus) 01582 406561
Luton Airport		01582 405100
Swimming	(Flitwick) 01525 717744	(Robinson Pool) 01234 212479

LIBRARIES

Bedford	01234 350931	Ampthill	01525 402278
Barton	01582 881101	Flitwick	01525 715268

LOCAL GOVERNMENT

Central Beds Offices (Chicksands)		0300 300 8000
Mid-Beds MP		Nadine Dorries 01462 811992
Central Bedfordshire Councillors		Michael Blair 01525 404513
	Paul Duckett 07988 184061	Paul Downing 0300 300 8541
Clophill Parish Council		Peter Clarke 01525 861179
	(Clerk)	Mrs Lyn Lyman 01908 584159

HOSPITALS

Bedford (North & South)	01234 355122	Admissions	01234 261150
		Appointments	01234 359012
Luton & Dunstable			0845 1270127

DOCTOR'S CLINICS

Ampthill	(Houghton Close) 01525 300898	(Oliver Street)	01525 631395
		(Greensands)	01525 631390
Shefford	Enquiries 01462 818620	Appointments	01462 810034
Barton 01582 528700		Flitwick	01525 715300

POLICE

County Police HQ		Non Emergency	101
Ampthill Station			01234 841212
Clophill Local Policing Team			101
			01234 842613

CHURCHES

St Mary's Parish Church		Liz Henman	01525 860108
St Francis of Assisi Shefford			01462 813436
Clophill Methodist Church		(Mr Jim Davies)	01525 860829

SCHOOLS

Clophill St Mary's C of E Lower School & Nursery (Headteacher Mrs K Bingley)		01525 860206
Harlington Upper School , Harlington		01525 755100
Preschool clophillpreschool@gmail.com	(Chris) 07936 006381 or (Imogen)	07765 887868
Redborne Upper School , Ampthill		01525 404462
Robert Bloomfield Middle School , Shefford		01462 628800

Village groups

Beverley Court		860920
Brownies	https://enquiryym.girlguiding.org.uk	
Clophill Community Care	Duty Contact	07791 773705
Clophill Heritage Trust	Ali Bradbury	07894 710001
Clophill Parish Action	Ali Bradbury	07894 710001
Clophill St Mary's C of E Lower School & Nursery	Sharon Kempson	860206
Clophill Toddler Group	Caroline Daniels	07734 495348
Clophill United Charities	Gillian Hill	860539
Conservation Group	Brian Adams	862297
Flower Club	Gillian Hill	860539
Friends of the Cheshire Home	Sue Pearson	861110
Funzone After School Club		07903 167493
Greensands Community Choir	Luke Howard	07975 520085
Indoor Carpet Bowls	Tony Meredith	860754
Messy Church	Victoria Higgins	07920 568861
	victoriajhiggins@hotmail.co.uk	
St Mary's PTA	Julia Skelton	07774 993973
Scouts and Cubs	Ralph Rayner	403956
Tea and Chat	Anita Errick	860695
Tuesday Club	Betty Hampson	860750
Village Hall Booking Secretary	Marilyn Browning	07821 643936



EMT
ACADEMY
EMERGENCY
MEDICAL TRAINING

Tel: 07966 665654

Web: www.emtacademy.co.uk
Email: carrie@emtacademy.co.uk



"like" us on
facebook



follow us on
twitter



ASSOCIATION OF FIRST AID AND HEALTH & SAFETY TUTORS

EMT Academy – Emergency Medical Training is a Clophill based First Aid Training company

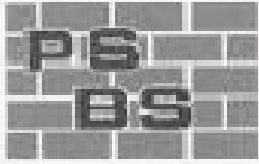
All EMT Academy trainers have worked professionally as Emergency Medical Technicians, Paramedics or Police Firearms Medics so we can bring real life experience and scenarios to your course.

Courses Available

- First Aid at Work
- Family First Aid
- First Aid at Work Requalification
- Paediatric First Aid
- Emergency First Aid at Work
- Basic Life Support
- Annual Refresher
- Bespoke First Aid*
- Automated External Defibrillator

Our feedback shows that the one-to-one practical skills taught by our instructors ensure students feel confident to deal with any unexpected medical emergency.

If you are a parent, grandparent, babysitter, childminder, carer, employer or an organisation* e.g. sports clubs, Guides/Scouts, equestrian, please contact us, we will be happy to discuss which course will best suit your needs.



PETER SHARPE

BUILDING SERVICES LTD

Call us first for ALL your building works and get reliability, quality & sensible prices.

Domestic extensions

Design & build service

General building works, drives, patios

Carpentry, kitchen fitting, wall & floor tiling

Laminate flooring & hardwood flooring

Mini digger and driver hire

Electrical installations including
Building Regulation part P certification

Roofing repairs carried out

Conservatories, UPVC windows

'BEDFORDSHIRE'S PROFESSIONAL BUILDER'

01525 872762 / 07850 803021

email: psbsltd@btconnect.com

A L & G ABBOTT

F u n e r a l D i r e c t o r s

~ Established 1832 ~

WITH YOU WHEN IT MATTERS MOST

An independent family business continuing to
provide a caring & professional service to Bedford,
Kempston
& the surrounding villages.

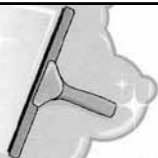
- 24 Hour Personal Service
- Private Chapels of Rest
- Home Arrangements
- Pre-Paid Funeral Plans
- Green Burials
- Civil Services Available



T 01234 843222

www.abbott-funerals.co.uk support@abbott-funerals.co.uk

150 BEDFORD ROAD, KEMPSTON, BEDFORDSHIRE, MK42 8BH



Time to Shine

Peter Hendry
**Traditional
Window Cleaner**

07590599381
phendry8@hotmail.co.uk



Compu-Doc

PC / laptop crisis ?

01525-402227

Call the Doc for -

Hardware & software

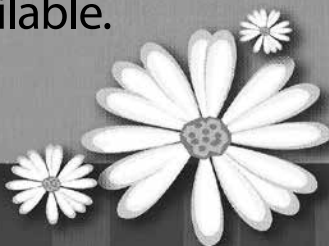
Diagnosis & treatment

john.stafford@compu-doc.co.uk

Daisy Cooper

Spring cleans, one off cleans and
moving home cleans all available.

Daisycooper22@hotmail.co.uk
Please call 07913 332914



Keeping your home as fresh as a Daisy

Telephone
**01525
860526**

The Stone Jug

A Free House
BACK STREET, CLOPHILL

The start of 2016 saw the 'matriarch' celebrate a BIG birthday. Despite her (more) senior years, she is still quite partial to a 'Jagerbomb' or two and a good old knees up (even if the knees don't get so far up now!). Life is what you make it, so live it to the full and let 'The Jug' be part of your life in 2016.

- 5 real ales, including 2 guest pumps that change frequently (see our Facebook page for details)
- selection of wines and Prosecco by the glass – or even better, by the bottle
- home-cooked lunches Tues-Sat, 12pm-2pm



REMEMBER OUR MOTTO
"A VISIT TO THE JUG IS BETTER THAN GOING TO A PUB"
CHEERS JOYCE & VIKKI

www.stonejug.co.uk

www.facebook.com/thestonejugclophill



Matthew Dibden

- Architectural Design
- Planning Applications
- Building Regs

Office: **01525 860186**

Mobile: **07972 197754**

Email: **matt@daniel-design.co.uk**



www.daniel-design.co.uk



Greensand Community Choir
LOVE SINGING!
sing with an exciting local choir ...

Come along to your local **community choir**,
for men and women of all singing abilities!
Mondays, 8.00-9.30 pm at St. Mary's Church, Clophill.

- Come and sing with an exciting new local choir led by a professional musical director
- Uplifting music in a variety of styles: musicals, classic pop, folksongs, sacred and world music
- Welcoming singers of all abilities - no audition, no need to read music!
- New members - come along any time for a free taster



Enquiries to:
greensandcommunitychoir@gmail.com
or ring Luke on: **01525 838199**

We've got the space for you!

Introducing our
new quarter-page
ad size – want one?

Contact our Advertising Manager
at ads@clophillspotlight.co.uk



- Accountants who know how businesses run
- Qualified Chartered Accountant and Chartered Tax Advisor
- Friendly Accountants who listen to your needs
- A wide range of services offered

Call

01525 552250



for a FREE initial meeting

www.savageaccountants.co.uk

Company Registration Number: 09214570
Cure your tax headaches

PERSONAL DOG WALKER

£10 per hour
£6 per half hour

- First Aid Certified
- Insured



Text or call Corrane on

07576 473373 or **01525 630740**

Corrane's personal dog walking

SJ TAX & ACCOUNTING

QUALIFIED ACCOUNTANT

Professional friendly services,
Tax advice, Free initial consultation,
Sole trades, Ltd companies,
Bookkeeping, Payroll,
CIS, VAT & Tax

**DOWNLOAD OUR FREE APP
"SJ TAX LTD"**

contains lots of free tax info and
a free income and expenses tracker

e: sally@sjtax.co.uk

t: 01234 831997

m: 07899 808592

K9 trendi grooming solutions



Qualified, caring, professional,
mother and daughter grooming team

**FIRST GROOM 10% OFF PLUS 10% OFF
ANY PURCHASE OF DOG FOOD/TREATS**

WITH THIS ADVERT

Visit our website

www.k9trendi.chicksandspetservice.co.uk

find us on Facebook:- facebook.com/k9trendi

Or give us a call:-

Tracey 07711 563000 Lisa 07894 582781

**SAFE LOCAL COLLECTIONS AND DELIVERY OF
YOUR K9 COMPANION AVAILABLE**

Visit us at **Chapel Feeds**

**Pet, animal feed
and birdseed**

suppliers

**Home delivery
available**

**Unit 6 Woodside
Farm, Clophill Road
Maulden, MK45 2AE**

**Or call Jill on
01525 860150**

ARCHITECTURAL DRAWINGS AND BUILDING DESIGN SERVICES

Professional Architectural design services provided for all types
of private residential building projects including extensions, loft/
garage conversions, garages and outbuildings through to new build
dwellings with all necessary council approvals obtained.

For free estimates and advice contact Steve
Coates on Flitwick 01525 862457 or 07960 215053.

stevecoates72@gmail.com

S & S Coates Surveying & Design, Unit 4 The Courtyard,
r/o 13 High St, Clophill, MK45 4AB.



Mobile Hairdresser

Reasonable prices

Reduced price for 2 or more
clients per household

Senior Citizens discount

Text or call Corrane on

07576 473373

01525 630740



mobile beauty treatments to fit in with busy lifestyles



...because everyone deserves to be pampered

Hot stone and Swedish massage
Indian head massage
Pregnancy massage
Manicures & pedicures (Shellac gels available)
Waxing
Eye treatments
Facials

Affordably priced... all with the convenience and
comfort of being in your own home

Gift vouchers available

For more information and to make
an appointment please contact:

Elizabeth Warfield (member of BABTAC)

Tel: 07816 789071

Email: lizziewarfield@hotmail.co.uk

THE BLUECAT



LUXURY CATTERY

Tel: 01525 862416

www.thebluecat.net coming soon!

Find us on Facebook @thebluecatcattery
or email us at enquiries@thebluecat.net

Now open! The Bluecat is a brand new,
luxury cattery set in the quiet area of
Jacques Lane in Clophill. With just 14
cat chalets, we have time to fuss, pamper
and play with your cat to its heart's
content whilst in our care.

Please call for further information.

Misty Double Glazing?

Over 30
Years
experience.
FREE
Quotes

Over 30
Years
experience.
FREE
Quotes

**KEEP YOUR WINDOW FRAMES...
... WE JUST REPLACE THE GLASS!**

• UPVC • Aluminium • Or Wood

Because we replace just the glass the repair is a
Fraction of the cost of a complete replacement window.

BEFORE



AFTER



mistydoublinglazing.co.uk
QUALITY GLAZING SERVICES

01525 876808

WE ALSO REPLACE BROKEN...

• Glass • Handles • Hinges & Locks
AND REPAIR...Patio Doors & Conservatories!

Clophill Preschool

Welcoming children
from **2 years** of age

in the fantastic setting of Clophill Village Hall. Our highly qualified team is led by a qualified Teacher and a Nursery Nurse. We provide a safe, secure and stimulating environment with brilliant ideas and activities that open the doors to learning and beyond. Come and see what your 2, 3 and 4 year olds can learn with us, our door is always open.

Opening times:

Monday, Wednesday, Thursday 9.15 - 2.15; Tuesday 9.15 - 1.15

clophillpreschool@gmail.com
www.clophillpreschool.co.uk

Imogen 07765 887868 or Chris 07936 006381



Welcome to Clophill St Mary's C of E Lower School and Nursery

CLOPHILL St Mary's C of E SCHOOL

St Mary's is a Voluntary Aided Church of England Lower School based in the village of Clophill. We are a small friendly village school with close links to the local community, taking children aged from 2 years 7 months to 9 years.

St. Mary's is a Values Based school which provides children with a framework for living, tightly woven into the positive Christian ethos of the school.

Our vision at St Mary's is to provide a secure, inclusive and stimulating child centred environment, where all children are inspired to achieve their full potential.

Our aim is that every child will develop as a caring, respectful member of the community and society as a whole. We will achieve this through a creative curriculum based on our values, reflecting the Christian ethos of our school.

**Please call us on 01525 860206
to arrange a visit**



High Street, Clophill, Bedfordshire, MK45 4BE
Tel: 01525 860206 stmarysclophill@cbc.beds.sch.uk www.stmaryslower.info



The Happy Place.co.uk

On the Green beside the Post Office every Friday
3.30-7.30pm

We are your local mobile fish and chip van, we have been parked on the green every Friday for the past 6 years.

We serve only the highest quality produce, cooked fresh to order and served to you by our friendly staff.

Why don't you pop down and come and
Try Our Fry!

To avoid waiting in the cold, give us a call to
place your order on: 07833 786108

A big thank you to all our customers who have loyally supported us over the past couple of years.

Clophill

Mace

Post Office & Stores

- Fresh bread & dairy produce
- Newspapers & magazines
- Confectionery & tobacco
- Wines, beers & spirits
- Cards & stationery
- Household goods
- Baby products
- Toys & gifts
- Dry cleaning
- Photocopying
- Shoe repairs
- Post office counter services



Shop Hours

Mon - Sat 7.30 - 7.30 | Sun 8.00 - 1.00

Post Office Hours

Mon, Tues, Wed, Fri 9.00 - 1.00, 2.00 - 5.30 | Thu, Sat 9.00 - 1.00

THE GREEN, CLOPHILL 01525 860988

Proprietors:
Deepak & Dakhsa Chandarana

Stephens

Your local removals & storage company



Specialising in house removals and office relocations in the UK, Europe and Overseas.

REMOVALS

Local, National, International

STORAGE

Secure & Containerised

PACKING

Full Or Part & Materials

LONG ESTABLISHED REMOVAL COMPANY OFFERING A PROFESSIONAL, FRIENDLY SERVICE

COMPREHENSIVE INSURANCE • FREE ESTIMATES

01582 572967

STUART DREW ELECTRICAL SERVICES

MEMBER OF THE ECA
PART P CERTIFIED QUALIFIED TO 17TH EDITION

From extra lights & sockets, to re-wires. Fault finding and electrical safety certification. For a professional, courteous service with free estimates & all work guaranteed, please call me

29 Lincoln Way
Harlington
Beds
LU5 6NG

**Fully qualified & insured
30 years experience**

Telephone:
01525 875965
07941 812662

ROGER STOREY

YOUR LOCAL PAINTER AND DECORATOR

Friendly and Reliable Service
Many Years Experience

Please phone: **01525 861253** or **07800 777615**

Based near Toddington, Bedfordshire.

**We rescue, rehabilitate & re-home stray & abandoned cats.
We have lots of beautiful cats waiting for loving homes.**

Ring the shelter on 01525 875993

or Sue on 01582 650167 to arrange a visit.



Registered Charity No. 1098984

Visit our website @www.straycatrescue.org.uk



GARDEN DOCTOR

Rob McLeod
Pruning Specialist

Professional, Local, Experienced

- * All tree and hedge work undertaken
- * High standard of work
- * Rubbish cleared from site
- * Free Quotations
- * Local, reliable service you can trust

Tel: 07763 239340 or 01525 861568
email: garden.doctor@btinternet.com

Call the Garden Doctor and bring Good Health to your Garden



Tree Surgery & Removal
Shrubs & Fruit Trees
Pruning & Spraying
Fully certificated and insured

SHEFFORD BUILDING SUPPLIES LTD

44 HIGH STREET, SHEFFORD, BEDS

Key Cutting
Tools
Timber
Sheet Materials
Gardening
Paint



Gas
Electrical
Plumbing
Sand & Cement
Domestic
Ironmongery

Tel: 01462 813381
TRULY AN ALADDIN'S CAVE
Free delivery

AIMS

Tim Kemp BA FCA
Top Barn Rectory Road
Steppingly MK45 5AT

TEL/FAX : 01525 717141
MOBILE : 07900 823 012
www.aims.co.uk
e-mail: timk@aims.co.uk

- ◆ **Professional** service providing for all your accounting and tax needs
- ◆ **Practical** advice based on 20 years experience in **running** businesses
- ◆ **Personal** approach with fixed fees relevant to the work **you** need
- ◆ **Friendly, local** accountant supporting the community for over 20 years

Please call for a free, no-obligation initial meeting

ACCOUNTANTS FOR *business*

Hills-Howson Financial Services

Financial adviser appointments available in your home or our office

The Old Post Office
53 High Street
Clophill
Beds MK45 4BE

Tel: 01525 861803
www.hills-howson.co.uk
hills.howson@btconnect.com

Including:-

Investments

Pensions

Protection

Annuities



W&H PEACOCK
AUCTIONEERS & VALUERS

Auction Sales and Valuations

Valuation, collection & auction
service of individual items through
to complete property clearances.

Call for a free no obligation
collection quote or email
info@peacockauction.co.uk

SALE ENTRIES NOW INVITED



Bedford Auction Centre, 26 Newnham Street, Bedford MK40 3JR

01234 266 366 peacockauction.co.uk

THE COMPUTER MAN



Got a problem with your computer and don't know what
to do? Suffering with a virus or spam?

Don't hesitate! Ring your local computer expert

**Remote repairs or home visits
(Day, evening & weekend)**

**Lap top/desk top loan
(Free pick up & drop off in local area)**

Comprehensive health check from £35 (Special Offer £35 - normally £40)
Refurbished fl at screen available from £15 • Refurbished base units available from £99



Contact Stephen Amos
07976 718567
the.computerman@ntlworld.com





rincon tuition - Spanish & Maths

Expand your knowledge. Boost your confidence

01525 860743

Exam techniques and preparation. Revision and practice papers: SATs and GCSE

Spanish for business or pleasure, all levels. GCSE & A-levels

Skills development: conversation, reading and writing

Maths: Boost your confidence and abilities

KS1, KS2, KS3, SATs and GCSE practice papers

DBS checked and references - Reasonable rates

01525 860743 - 07952 667814 rincontuition@aol.com

NO PRESSURE SALES – YOU DEAL WITH THE OWNER FROM START TO FINISH



- ✓ A-rated windows as standard
- ✓ Composite doors
- ✓ High security
- ✓ Bifolding doors
- ✓ Conservatories
- ✓ Fascias, soffits and guttering
- ✓ Insurance-backed guarantee
- ✓ Fensa certificate



Contact: ANDY WOOD

01582 536944 or 07796 272539

sales@awwindows.co.uk



See reviews from satisfied customers at awwindows.co.uk

Baths, Toilets &
Showers
Sinks and Taps
Guttering
Leaks and Burst Pipes
Drainage
Handyman jobs also



Silsoe based
No call out fee – free estimates
Fully insured and guaranteed
No job too small
07720 723653 01525 864859
info@betaplumbing.co.uk
www.betaplumbing.co.uk

Foot Health Practitioner

Corns, Hard Skin, Verruca, Fungal Nail Infection,
In-growing Toe Nails, Diabetic Foot Care, Athlete's Foot,
Pedicure, General Nail Cutting etc.

In the comfort of your home or at my clinic

Ann Gibbons MCFHP, MBAFHP.

Competitive Rates

Tel: 01462 813252 Mob: 07872 315763

Web: www.shamrockclinic.co.uk

For opening hours and other details please refer to my website



Poppins Chimneys

**Chimneys Swept
Wood and Multifuel Stove
Installation & Liners**

Great Service - Great Price!



01525 860424 or 07858 688785
mark@poppinschimneys.co.uk



We'll get you up and running!

We offer the very best physiotherapy care from a friendly approachable team of nine highly trained Chartered Physiotherapists all members of the Health Professionals Council

Expert treatment including:

- Neck/Back/Hand and Tennis Elbow Pain
- Headaches/Migraine/Sciatica
- Incontinence/Pelvic/SIJ/SPD/Pregnancy Back Pain
- Sprains/Strains/Torn Ligaments
- Whiplash/RSI/Osteoporosis/Sports Injuries

Specialist Physiotherapists:

- Neurological, Paediatric, Vertigo and Dizziness

We also offer complementary treatments:

- Acupuncture, Reflexology, Massage, Indian Head Massage, Chinese Herbalist, Lymphatic Drainage and Pumps



Tel: 01525 720882 www.chartered-physiotherapy.co.uk Email: amphillphysio@btconnect.com

7 Station Square, Flitwick, MK45 1DP

E.T. Accountancy Services

Experienced Chartered Accountant and Chartered Tax Adviser based in Clophill providing a full range of accountancy and taxation services to businesses and private individuals.

To arrange a free initial consultation please telephone me on 01525 590465 or email emma@et-accountancy.co.uk

Chartered Accountant and Chartered Tax Adviser

Emma Thoulass FCA CTA www.et-accountancy.co.uk 01525 590465



Chapman & Kirby Heating

Gas, Plumbing & Heating Installations

Gas Safe Registered

Boiler Servicing & Maintenance



Call us now

Tel: 01525 861255 Mob: 07831 132308

Email: info@chapmanandkirbyheating.co.uk

1C, Old Silsoe Road, Clophill, Beds., MK45 4AR

NEVILLE

FUNERAL SERVICE

Established 1875

Reassurance when you need it most

Serving the people of Bedfordshire since 1875



Neville Funeral Service

inc. George Squire & Sons since 1976

24 Clifton Road

Shefford SG17 5AE

t: 01462 813258

e: shefford@nevillefuneralservice.com



Neville Funeral Service

The Old Church Flitwick Road

Ampt Hill MK45 2NT

t: 01525 406132

e: ampt Hill@nevillefuneralservice.com



www.nevillefuneralservice.com

The UK's No.1 Lawn Care Company



- Scarification
- Aeration
- Lawn Fertilising
- Weed Control
- Moss Control
- Water Conserver
- Pest and Disease Management



GreenThumb has a variety of treatment programmes to suit your pocket that include our traditional 'pay-as-you-go' service and our new, pay monthly, Direct Debit programmes, where you can save up to 25% annually.

Our treatments start from £5 per month, that's cheaper than D-I-Y and without the hassle!

Call your local branch today for a FREE lawn analysis and no obligation quote.

0800 0111 222

GreenThumb
LAWN TREATMENT SERVICE



Find us online at: www.greenthumb.co.uk



- Suppliers of traditional and modern equipment
- Working whirlpool & spa baths, power & steam shower systems on display
- Over 40 settings on display
- Complete installation service if required
- Personal friendly service from a family run business
- Wall and floor tiles
- Accessories
- Mirrors
- Bathroom furniture
- Heated towel rails
- Saunas
- Bathroom cabinets

SHEFFORD 01462 627002

www.bathroomvogue.com

Unit 4A, Shefford Industrial Park, St Francis Way, Shefford SG17 5DZ

Woburn
Country Foods



Woburn Country Foods

Online - Catering - Retail Butcher

High Quality Local Meat

- 21 Day Matured Beef -
- Farm Assured Chicken -
- Bedfordshire Lamb -
- Bedfordshire Pork -

Farm Shop

West End Farm, Haynes West End
Bedford, MK45 3RA

Order Online & Collect In Store
www.woburncountryfoods.com



LOCAL ALLOY WHEEL REFURBISHMENT


mintalloys
complete alloy wheel refurbishment

Tel:
01525
860069

Alloy Wheel Repairs

Diamond Cut Alloy Wheels Repaired On Site

Powder Coat Primers & Lacquers

Fast Turnaround Alloy Wheel Welding

Tyres At Competitive Prices

NEW for 2015 - 4 Wheel Alignment Service

www.mintalloys.co.uk

CTP CONSTRUCTION

Local Building Company

Established for over 25 years

U.K. Trades Approved

No job too small - Competitive prices

Free estimates given on all Building Work

Tel: Silsoe 01525 860105

www.ctpconstruction.co.uk



Stephen's Plants

at Maulden Garden Centre on the A507 bypass (near A6 / Clophill)



for your

Seasonal and hardy plants
Vegetable seeds and plants
Hanging baskets and tubs
plus composts and fertilisers
all with EXPERT ADVICE *and a smile*

Telephone: 01525 861696

Nature is our theme.....

Boarding Dogs & Cats
Day Boarding - Dogs
'Nature' Food Shop
plus
On site Grooming - Dogs
Off site Walking - Dogs

Conifer
Kennels & Cattery

**01525
860339**

www.coniferkennels.co.uk 

TRIMENT ENHANCED raw diet formula
natures:menu REAL FOOD WITH LOVE
frozys
Green Pantry
ARDEN GRANGE multi-breed, multi-compatibility

APPLY TO STOCKIST: Conifer Kennels & Cattery, The Causeway, Clophill, Beds. MK45 4BA

Wrest Park Day Nursery, Silsoe

Come and visit our beautiful nursery and pre-school based within the grounds of Wrest Park. We offer care for 0-5 year olds 8am to 6pm Monday to Friday for 51 weeks of the year.

We were Rated 'Good' by Ofsted in May 2014 and they commented that 'Staff are enthusiastic, model good social behaviour to children and offer frequent praise' (Ofsted 2014).

We offer all day sessions, am or pm sessions or a 9-3 'school day' session. We accept childcare vouchers and 2,3 and 4 year old funding.

Please call us on 01525 861743 or info@wrestparkdaynursery.co.uk
www.wrestparkdaynursery.co.uk



BURGLAR ALARMS

New Alarms Fitted or Upgrade Existing Alarms

BURGLAR ALARMS

We fit New Alarms - Wired or Wireless Systems
We can service and maintain your existing alarm

CCTV

We fit high quality systems to maximise your security.
Access your CCTV via the internet or mobile.

DOOR ENTRY

We fit a range of quality video and audio intercoms
to suit your needs.

*We are a family run business with over 35 years
experience in home security and crime prevention.*



www.maximumsecuritysystems.co.uk

Contact:

01582 864138 / 07746 111520

For a free quote and consultation

Root 'n Branch

Your Local Friendly & Reliable Gardener

All aspects of Garden Maintenance undertaken
• PRUNING • MOWING • WEEDING • PLANTING • HEDGING

Southfields, Shefford
email: whooley@hotmail.co.uk

Tel: 07771 537385

Public Liability
Insured

ADAM IN YOUR GARDEN

**TREE SURGERY, HEDGE TRIMMING,
TURFING, FENCE MAINTENANCE,
DECKING, PATIO CLEANING**



Qualified, Fully Insured, Competitive Rates
Free Estimates

TEL: 01582 518954 MOB: 07828 490360

Web Site: www.adaminyourgarden.co.uk

ANDREW BAKER WINDOWS

9 SHEFFORD ROAD
CLOPHILL BEDS
MK45 4BT

SPECIALISING IN UPVC WINDOWS,
DOORS, CONSERVATORIES,
FASCIA, SOFFITS, GUTTERS AND
CLADDING. ALSO AVAILABLE FOR CARPENTRY
WORK. NO JOB TOO SMALL OR LARGE.

20 Years experience.
Free local quotes.

FENSA

Fensa Registered
FIVE YEAR GUARANTEE

Contact Andrew: 01525862804 / 07825017855

Email: abakerwindows@gmail.com

HIGH QUALITY CARPET, UPHOLSTERY, RUG AND LEATHER SUITE CLEANING

Ring Steve

(Barton) 01582 882620

(Mobile) 07769 042523

Email: bedscarpetcleaners@gmail.com

McCaffrey

Your central resource for residential
build, refurbishment and maintenance



General Building Works
Extensions
Internal Refurbishment/Alterations
Garage Conversions
Loft Conversions

Brickwork
Carpentry
Painting & Decorating
Purpose made Joinery
Bi - Folding Door Applications

Plumbing and Heating
Electrical installations
UPVC/Timber Windows
UPVC Conservatories

T. 01525 861041
E. info@mccaffreybuild.co.uk
W. www.mccaffreybuild.co.uk



WEC, BUILDING 52, WREST PARK,
SILSOE, BEDFORDSHIRE, MK45 4HS

COMPANY NUMBER: 7240869

MCCAFFREY BUILDING CONTRACTORS LTD



OSTEOPATHY

Deborah Beare BSc (Hons) Ost.
Registered Osteopath

**The Clophill Centre for
Complementary Therapy**
Clophill Fruit Farm,
Shefford Road
Clophill

- Cranial & Structural Osteopathy
- Neck & Low Back Pain
- Infant Feeding & Sleeping Problems
- Muscle Tension
- Sports Injuries
- Arthritic aches & pains
- Headaches

To book appointments call: **07969 921112**

Washing Machines Dishwashers Dryers Electric Ovens Repairs Servicing Sales



A local family business offering
a quality service at a competitive price
Est. 1981

Tel: CLOPHILL 860148
or Tim Downing direct on 07969 545 276

A member of the White Goods Trade Association
Fully Insured

MB

ACCOUNTING SERVICES

accounting solutions for the

Self-Employed and ***Small Business***

including

Bookkeeping • Accounts • Tax returns • Cash flows

For a totally confidential service at **very competitive rates** contact
Richard Fairholm T: 01525 861087 M: 07714189994 E: mbaccounts@btinternet.com

Hire Clophill Village Hall



Wedding Receptions
Birthdays & Special Occasions
Dances and Discos
Club & Community Meetings & Activities

Phone: 07821 643 936

Mail: Clophill.villagehall@gmail.com Web: www.clophillvillagehall.co.uk



ALL CARPENTRY & BUILDING SERVICES PROVIDED

Double Glazing • Windows & Doors • Granite Work Tops
Kitchens & Bathrooms • Wood & Laminate Flooring • Loft & Garage Conversions
Mini Digger & Driver For Hire

Call James 7 days a week on

01462 231734 07595 752466

jamesbonfieldcarpentry@yahoo.co.uk
Shefford, Bedfordshire



call or text : 07896 009382
facebook: [acutaboverachel](https://www.facebook.com/acutaboverachel)

USING PARABEN & SULPHATE FREE, 100% VEGAN, CRUELTY FREE PRODUCTS

A Cut Above Hairdressing

by Rachel

In the comfort of your own home
cutting & styling specialist

Salon experienced / Fully insured / Fully qualified to Level 3 Standard

Advertisers index

Architectural Services

Daniel Design & Build 22
S&S Coates Surveying & Design 24

Auctioneers & Valuers

W&H Peacock 31

Bathroom Services

Bathroom Vogue 36

Builders & Carpenters

James Bonfield Carpentry
& Construction 43
CTP Construction 41
McCaffrey Build 38
Peter Sharpe Building Services 19
Stuart Benson Building Projects IFC

Building Supplies

Shefford Building Supplies Ltd 29

Carpet Services

Carpet & Upholstery Cleaning 41

Car Services/Repairs

A&F Motors Ltd IFC
Mint Alloys 37
TC Coomber Car Services BC

Chimney Sweep

Poppins Chimney Sweep 33

Cleaning Services

Bespoke Domestic Cleaning IBC
Daisy Cooper 21
Time to Shine – Window Cleaner 21

Computer Services

Compu-Doc 21
The Computer Man 31

Electrical Services

Stuart Drew Electrical Services 28

Financial Services

AIMS Accountants 30
ET Accountancy Services 34
Hills-Howson Financial Services 30
MB Accounting Services 42
Savage Accountants 23
SJ Tax & Accounting Services 23

Food Suppliers

Woburn Country Foods 37

Funeral Services

AL&G Abbott, Funeral Directors 20
Neville Funeral Service 35

Garden Services

Adam in your Garden 40
Garden Doctor 29
Green Thumb Lawn Treatment 36
Root 'n Branch 40
Stephen's Plants 38

Health & Beauty

A Cut Above Hairdressing 43
Amphill & Flitwick Physiotherapy 34
Deborah Pedley Osteopathy 42
Mobile Hairdresser 25
Molly Coddle 25
Shamrock Clinic - Foot Health 33
The Tanning Salon IBC

Home Improvements

Roger Storey - Painter & Decorator 28

Medical Training Services

EMT Academy 18

Music and Entertainment

Greensands Community Choir 22

Nursery Schools

Clophill PreSchool 26
Clophill St Mary's C of E
Lower School and Nursery 26
Clophill Toddler Group 12
Wrest Park Day Nursery - Silsoe 39

Pet Services

Conifer Kennels & Cattery 38
K9 Trendi Grooming 24
Personal Dog Walker 23
Stray Cat Rescue 28
The Bluecat Luxury Cattery 25

Plumbing & Drainage Services

Beta Plumbing 33
Chapman & Kirby Heating 34
Drain Doctor BC

Post Offices

Mace Post Office & Stores 27

Print Services

Amphill Print Centre IFC

Public Houses

The Stone Jug 21

Removals & Storage

Stephens 28

Repair Services

Tim Downing Repair Services 42

Security Services

Maximum Security Systems 39

Take-aways

The Happy Plaice 27

Tuition Services

Rincon Tuition (Spanish & Maths) 32

Village Hall

Clophill Village Hall 43

Windows/Replacement

Andrew Baker Windows 40
AW Windows 32
Misty Double Glazing 25

IFC = Inside Front Cover

IBC = Inside Back Cover

BC = Back Cover

Ads from as little as **£50** per year

For further information about advertising in Spotlight,
please contact our Advertising Manager at ads@clophillspotlight.co.uk

The Tanning Station & Pebbles Beauty

- Sunbeds
- Massage
- Eyelash Extensions
- Bio Sculpture
- Pedicure
- Spray Tans
- Footcare Specialist
- LVL
- Facials
- HD Brows
- LCN Nail Extensions
- Manicure
- Hot Stone massage
- Waxing
- Jessica GELeration
- Threading



2 Steppingley Road, Flitwick, Bedfordshire MK45 1AJ
01525 720 095 www.tanningstation.co.uk

Opening Times

Monday - Tuesday	09.00 - 19.00
Wednesday - Thursday	09.00 - 21.00
Friday	09.00 - 19.00
Saturday	10.00 - 16.00
Sundays & Bank Holidays	CLOSED

merry maids

Relax. It's Done.®



Come home to a job well done.



Whatever your idea is of time well spent, we're pretty sure it doesn't include dusting, vacuuming or scrubbing floors. That's our job. Merry Maids home cleaning services gives you back the time you want to concentrate on the things that you enjoy.



- Domestic cleaning service for your home
- Customised to meet your needs
- Regular or one off cleans
- Trained & uniformed teams
- Full insurance
- Satisfaction guaranteed

Call Merry Maids on 01525 860957
for a free no obligation quote.
bedford@merrymaids.org.uk

merry maids.co.uk



DrainDoctor®

PLUMBING & DRAINAGE

24 Hours a day... 7 Days a week... 365 Days a year

Your Local Expert Plumbing & Drainage Service

**BEDFORD
& KEMPSTON**

01234 742 900

**LEIGHTON
BUZZARD**

01525 779 818



**BLETCHLEY &
MILTON KEYNES**

01908 849 814

**SANDY &
BIGGLESWADE**

01767 662 040

**FLITWICK
& AMPHILL**

01525 779 818

- All Emergency Plumbing
- All Drainage & Blockages
- No Call Out Charge
- Pre-fixed Prices
- Work Guaranteed

FREEPHONE ALL AREAS

0800 019 2416

T.C. COOMBER



**MOT'S CLASS 4/7
SERVICING & REPAIRS
CAR & COMMERCIAL
TYRES & EXHAUSTS
AIR CONDITIONING
DIAGNOSTIC CODE READING**

**Collection
& Delivery**
SERVICE AVAILABLE
Please ask

AMPTHILL
01525 406330

UNIT F, AMPTHILL INDUSTRIAL ESTATE, STATION RD, AMPTHILL, MK45 2QY